

333

台灣 桃園縣

龜山鄉文化二路188號 Jenny Wang ext.1744

廣達電腦股份有限公司

MS. M. F. CHANG, ENGINEER



MS. MIRANDA HSU, SPECIALIST 2
QUANTA COMPUTER INC
188 WEN-HWA 2ND RD
KUEI SHAN HSIANG
TAOYUAN HSIEN 333 TAIWAN

Date: 2013/01/11
Subscriber: 384717002
PartySite: 56090
File No: E142692
Project No: 12CA59166
PD No: 13M01624
Type: R
PO Number: MIRANDA HSU 30-O

Subject: **Procedure And/Or Report Material**

The following material resulting from the investigation under the above numbers is enclosed.

Issue

<u>Date</u>	<u>Vol</u>	<u>Sec</u>	<u>Pages</u>	<u>Revised Date</u>
	X1		Index Page(s)	
2007/11/06	X1	A138	Cert of Compliance	
2007/11/06	X1	A138	Revised Proc/Rpt Section	
2011/07/06	X1	A300	Revised Proc/Rpt Section	

If there are illegible images in this package, legible images may be found online via MyHome@UL under My UL Reports/CDA.

Please file revised pages and illustrations in place of material of like identity. New material should be filed in its proper numerical order.

NOTE: Follow-Up Service Procedure revisions DO NOT include Cover Pages, Test Records and Conclusion Pages. Report revisions DO NOT include Authorization Pages, Indices, Section General Pages and Appendixes.

Please review this material and report any inaccuracies to UL's Customer Service Professionals. Contact information for all of UL's global offices can be found at <http://www.ul.com/global/eng/pages/corporate/contactus>.

If you'd like to receive updated materials FASTER, UL offers electronic access and/or delivery of this material. For more details, contact UL's Customer Service Professionals as shown above.

This material is provided on behalf of UL LLC(UL) or any authorized licensee of UL.

TPI File

File		Volume	Page	Date:
E142692	Index	X1	1	2013-01-11

Index

Product Type	Model/Type Reference	Report Reference #	Status
Notebook	E1XX and G3XXA, which X can be any alphanumeric or blank	E142692-A1-UL	Withdrawn
Network attached storages	SNAP SERVER 4200, hp StorageWorks NAS 1000S, SNAP SERVER 4500, SN1-120E and ES1036, SNAP SERVER XXXXXX, where X may be any alphanumeric character or blank.	E142692-A2-UL	Withdrawn
Network attached storages	SU2-4200, SU2-4200A, CWSIME-1160-K9, CESSE-1151-K9, CWHSE-1141-K9 and CWWLSE-1131-K9.	E142692-A3-UL	Withdrawn
LCD Monitor	L70L, AL718, 101715(111706) and LE701M.	E142692-A4-UL	Withdrawn
LCD Monitor	10 15 55 (11 15 03), 10 15 56 (11 15 06), EN5400i, FPD1530, LE502, L5TL-X, L5TL-S, FTD-X521AS, FTD-X522AS, FTD-X522AS/BK where X may be any alphanumeric or blank.	E142692-A5-UL	Withdrawn
Network attached storage	SNAP DISK 10 , JBD-1000	E142692-A6-UL	Withdrawn
Notebook Computer	PP2180 series	E142692-A7-UL	Withdrawn
20.1" LCD Monitor	L0T, Acer AL2021XX, where X can be A to Z or blank	E142692-A8-UL	Withdrawn
Notebook Computer	ZPxxxx, where x can be 0-9,A-Z or blank.	E142692-A10-UL	Withdrawn
Network attached storages	1.SN7-2800 2.SNAP SERVER 18000	E142692-A12-UL	Withdrawn
LCD Monitor	L70L-S, L7T, AL171xxxx, FTD-G722AS and FTD-G722AS/BK where x may be any alphanumeric or blank.	E142692-A14-UL	Withdrawn
Docking Station	PR1010 Series	E142692-A15-UL	
Server	see Miscellaneous for details	E142692-A16-UL	
Server	QR-2000	E142692-A17-UL	Withdrawn
LCD Monitor	L70L-A, FPD1730(7004618)	E142692-A19-UL	Withdrawn
Server	MT-800	E142692-A20-UL	Withdrawn
Notebook/Tablet PC	ZI** and Ferrari 3***, where * can be any alphanumeric character or blank.	E142692-A21-UL	Withdrawn
LCD Monitor	L7VC, VLCDS27998-..., where . may be any alphanumeric or blank character.	E142692-A22-UL	Withdrawn
Flipscreen	BFS04-* **, 115***, 118***, IBFS**, IBFS**-WLAN, IBF-0** where * may be any alphanumeric character or blank. DI24S, DKEC24S	E142692-A23-UL	
LCD TV Monitor	VT1, GTW-L23M103, VB1, I-LC23Q1, 22 3351, VT1, HLQ2321W(Haier), BTVG23-US(Beyond)	E142692-A24-UL	Withdrawn
LCD TV Monitor	VT2, GTW-L26M103, VB2, I-LC26Q1(Best Buy), 556851(Dixons), VT2, HLQ2621(Haier), BTVG26-US(Beyond)	E142692-A25-UL	Withdrawn
Multi-function digi-cam	Models DCyz (where y can be 0 to 9, the z can be A to Z or blank), SV-200, DC-xxxx (where x can be 0 to 9, A-Z or blank), and M Catch 1xxx ("x" can be 0-9, A-Z), M Catch 1000.	E142692-A26-UL	
LCD Monitor	L5VC (Quanta) and VS10040 (ViewSonic)	E142692-A27-UL	Withdrawn
LCD Monitor	L7VD (Quanta) and VS10049 (ViewSonic).	E142692-A28-UL	Withdrawn
Server	QR-500, SN6-1400, HSTNM-S003, hp	E142692-A30-UL	

File		Volume	Page	Date:
E142692	Index	X1	2	2013-01-11

	StorageWorks NAS 1500S, Cisco Appliance QR-500		
Countertop	CT04, 115xxx, IBCxxx and IBCxxx-WLAM where x may be any alphanumeric character or blank.	E142692-A31-UL	
Notebook Computer	PP08S	E142692-A32-UL	Withdrawn
Network Attached Storage	JBD-3000F	E142692-A33-UL	
Notebook Computer	HSTNN-Q09C	E142692-A34-UL	Withdrawn
Mini Server	Mini-Appliance DIVA038, Mini-Appliance DIVA188, CWWLSE-1030-K9 and CE-501-K9	E142692-A35-UL	
Network Attached Storage	JBD-3000FA	E142692-A37-UL	
Notebook Computer	HSTNN-Q05C	E142692-A41-UL	Withdrawn
Blade Server	BMX, QB-700	E142692-A43-UL	
Docking Station	HSTNN-QX01	E142692-A44-UL	Withdrawn
Server	SVU, QR-1200	E142692-A52-UL	Withdrawn
Multi-function digi-cam	M Catch 2xxx where x can be 0 to 9, A-Z or blank	E142692-A53-UL	
Network VirusWall	TREND MICRO(superscript TM) Network VirusWall(superscript TM)2500, InterScan (superscript TM) Web Security Appliance 2500 See Enclosure Miscellaneous for Model Name character location details.	E142692-A55-UL	
Notebook Computer	PC-VxxxHxxx	E142692-A56-UL	Withdrawn
Notebook Computer	HSTNN-Q08C	E142692-A58-UL	
Notebook Computer	N411, RWXX, where X can be 0-9, A-Z or blank.	E142692-A59-UL	
Server	QR-1000, QR-1050	E142692-A60-UL	Withdrawn
Notebook Computer	PC-VxxxRxxx	E142692-A61-UL	
Multi-function Digi-Viewer/ Digital Photo Frame	PV** and M-Viewer 1****, where x represents any alphanumeric characters or blank.	E142692-A64-UL	
Notebook Computer	PC-V*12FB**W, PC-V*10MB**W, PC-V*12FB*****W****, PC-V*10MB*****W****, VERSA S1100, VERSA FS1100, PC-GLyyFJH*****, PC-VxyyzB*****, where "x" can be Y or J, "y" can be 0~9, "z" can be F or M, " * " can be 0~9, A~Z or blank.	E142692-A65-UL	Withdrawn
LCD TV Monitor	VV3, OTP-3211W (Niko), BTVB32US, LCD32-550, AT3201WXXXX (X maybe any alphanumeric characteristic or blank), LT-3222 (Norcent)	E142692-A66-UL	Withdrawn
LCD TV Monitor	VS2, BTVM17US, BTVM17XXXXX (X can be 0-9, A-Z or blank)	E142692-A67-UL	Withdrawn
23 inch LCD TV Monitor	VT3, VB3, and BTVG23XXXXX(Salton), where X maybe any alphanumeric or blank.	E142692-A69-UL	Withdrawn
FC to FC SAN Controller	QSC-1000	E142692-A70-UL	
LCD TV Monitor	C1H, C1Sxxxx, OTP-2011R and AT2001xxxxx, x can be any alphanumeric character or blank	E142692-A72-UL	Withdrawn
26 inch LCD TV Monitor	VT4, VB4, OTP-2613W(Niko) and BTVG26XXXXX(Salton), where X maybe any alphanumeric or blank.	E142692-A79-UL	Withdrawn
Storage	C1300/SC300, QN1-1400, QSSC-820	E142692-A80-UL	
Notebook Computer	2529, 2530, 2531, 2532, 9450, 9451, 9452, 9453, 0660, 0672, 0673, 0674 and 0675	E142692-A82-UL	Withdrawn

File		Volume	Page	Date:
E142692	Index	X1	3	2013-01-11

Notebook Computer	2511, 2512, 2513, 2514, 8747, 8749, 9440, 9441, 9442, 9443 and 9448.	E142692-A83-UL	Withdrawn
Notebook Computer	PC-LA**0DD**, PC-VJ10M***W, PC-VJ12FHB*W, PC-VY10MHB*W, PC-VY12FHB*W, PC-GL10MAN*1 and PC-GL12F*N*1	E142692-A84-UL	Withdrawn
Notebook Computer	PC-V***RF*W, where * can be any alphanumeric characters or blank.	E142692-A86-UL	Withdrawn
Notebook Computer	EDXX, where x represents any alphanumeric characters or blank.	E142692-A87-UL	
Notebook Computer	PC-V***RF*W, where * can be any alphanumeric characters or blank.	E142692-A90-UL	Withdrawn
Management Ethernet Switch	LB2	E142692-A92-UL	
Storage Controller	S500/N500	E142692-A93-UL	
Server	QR-2700, QSSC-300, QSR-30D and QSR-30	E142692-A94-UL	
Management Ethernet Switch	LB4	E142692-A95-UL	
Port Replicator	HSTNN-Q03X	E142692-A97-UL	
Port replicator	FPCPR63** ("**" can be 0~9, A~Z or blank)	E142692-A98-UL	
Notebook Computer	PC-V*****F*X (The first "*" can be Y or J, the second and third "*" can be 0~9, the fourth "*" can be F or M, the fifth "*" can be W or R, and the sixth "*" can be E or U for marketing purpose)	E142692-A99-UL	Withdrawn
Notebook Computer	HSTNN-Q15C, HSTNN-Q30C	E142692-A101-UL	
Serial Attached SCSI JBOD	JBD-4000S	E142692-A104-UL	
Network VirusWall	InterSan TM Gateway Security Appliance	E142692-A105-UL	
Server	3013	E142692-A106-UL	
Server	QR-1250, EXP220	E142692-A107-UL	
Server	3012	E142692-A108-UL	
Serial Attached SCSI JBOD	JBD-2000S	E142692-A109-UL	
Storage Controller	QRS-2000, QRS-200S, DNS3500	E142692-A110-UL	
Notebook Computer	NEC TCM 160 and QUA_K2MXX (X=0~9, A~Z or blank)	E142692-A112-UL	
Server	QSR-29S, i1-272AH, QSR-29AH, QSR-29A, i1-272T.	E142692-A114-UL	
Cisco TelePresence High Definition (1080P) 65 inch Display	MC8, CTS-DISP-65-GEN1	E142692-A115-UL	
Notebook Computer	(1) Model PC-V*****Z*1 (The first "*" can be Y or J, the second and third "*" can be 0~9, the fourth "*" can be A, E or M, the fifth "*" can be W or R, and the sixth "*" can be E or U for marketing purpose) (2) Model PC-V*****Z*2 (The first "*" can be Y or	E142692-A116-UL	

File		Volume	Page	Date:
E142692	Index	X1	4	2013-01-11

	<p>J, the second and third "*" can be 0~9, the fourth "*" can be A to Z, the fifth "*" can be W or R, and the sixth "*" can be E, U or R for marketing purpose)</p> <p>(3) Models PC-V*17*XF*3, PC-V*16*XF*4 (The "*" can be 0~9, A to Z or blank for marketing purpose)</p> <p>(4) Models PC-VY***WZ** and PC-VJ***WZ** (The "*" can be 0 to 9, A to Z, or blank for marketing purpose)</p> <p>(5) Model PC-V****WZ*4 (First "*" can be V or J, second and third "*" can be 0 to 9, fourth and fifth "*" can be 0 to 9, A to Z, or blank for marketing purpose)</p> <p>(6) PC-V****WZ*5 (First "*" can be V or J, second and third "*" can be 0 to 9, fourth and fifth "*" can be 0 to 9, A to Z, or blank for marketing purpose)</p>		
Notebook Computer	Lenovo 3000 Y33X and TIANYI F3XXX (X maybe 0-9, A-Z or blank)	E142692-A117-UL	
TelePresence High Definition (1080P) 65 inch Display	MC8U, CTS-DISP-65-GEN2	E142692-A118-UL	
Notebook Computer	HSTNN-Q22C	E142692-A119-UL	
Notebook Computer	PC-V***MFC****, PC-V***MFD****, PC-V***MFR****, PC-V***MFS**** (The first "*" can be Y or J, the second and third "*" can be 0~9, the fourth to eighth "*" can be 0~9, A~Z or blank for marketing purpose and no impact safety related critical components and constructions.) and NEC VERSA L22XX, (where X can be 0 to 9 or A to Z for marketing purpose and no impact safety related critical components and constructions.)	E142692-A120-UL	
Server	QSR-58A, QSR-58S, QSSC 580, QSR-58All, QSR-58SII and QSSC 582.	E142692-A121-UL	
IP PHONE	YV** (* = 0-9, any alphanumeric or blank)	E142692-A124-UL	
Syspine Digital Operator System	DOS-A50	E142692-A125-UL	
Server	5010	E142692-A129-UL	
Digital Photo Display	5FF2***, 7FF2*** (where * can be 0-9, A-Z or blank)	E142692-A132-UL	Withdrawn
Server	QSR-58J, QSR-58JS, QSSC-585, QSSC-585S, F1DH	E142692-A133-UL	
Digital Photo Display	10FF2*** (where * can be 0-9, A-Z or blank)	E142692-A134-UL	Withdrawn
Server	5020	E142692-A136-UL	
Notebook	m15x-R1***** (where * can be A-Z, 0-9 or blank).	E142692-A137-	

File		Volume	Page	Date:
E142692	Index	X1	5	2013-01-11

		UL	
Laptop Computer (OLPC)	XO-1.75, XO-4, XO-4 TOUCH	E142692-A138-UL	
Server	QR1-1000, QSSC-310	E142692-A139-UL	
Server	QSSC-295, QR1-2000 and QR1-2050	E142692-A140-UL	
Server	QR1-1600, QSSC-810, QSSC-385, QR1-2650	E142692-A141-UL	
Sun storage Tek J4200	J4200	E142692-A145-UL	
Server	QSSC-680, QR2-2700	E142692-A146-UL	
Notebook Computer	E510, ED510, LGE51.... (where "." can be 0-9, A-Z or blank)	E142692-A149-UL	
Server	3012I	E142692-A150-UL	
Sun storage Tek J4400 or Sun storage Tek J4410	J4400, J4410	E142692-A151-UL	
Notebook Computer	PC-VY2**E*****, PC-VJ2**E*****, PC-VY2**F*****, PC-VJ2**F*****, (where * can be 0-9, A-Z or blank.)	E142692-A153-UL	
POS Terminal	650	E142692-A158-UL	
Notebook Computer	LGR41, R410, RD410, RB410, RV410	E142692-A159-UL	
Server	QR1-4600, S44, QSSC-440	E142692-A160-UL	
Notebook Computer	LGR51, R510, RD510, RB510, RV510	E142692-A161-UL	
Network Switch	QSSC-LB600SF, QSSC-LB610CX	E142692-A167-UL	
Server	QR1-4650, QSSC-2D0, QR1-2A0, QSSC-2A0	E142692-A171-UL	
ClarionMiND	NR1**, NH1**, (** can be 0-9, a-z, A-Z, or blank, and no impact safety related constructions and critical components.)	E142692-A173-UL	
Personal Computer	CLGYA-0806	E142692-A177-UL	
Notebook Computer	NL1XX (X = 0-9, A-Z or blank)	E142692-A179-UL	
Network Switch	QSSC-LB410GS , QSSC-LB420GC	E142692-A182-UL	
Network Switch	TurboIron 24X, 4002-X2A/AX2	E142692-A186-UL	
Server	QR1-890, QSSC-890XXXX (Where X can be any alphanumeric character or blank.)	E142692-A187-UL	
Storage	DDXXXX (X can be any alphanumeric character or blank)	E142692-A190-UL	
Network Switch	LB6M	E142692-A191-UL	
Server	BX900, BX9	E142692-A192-UL	
Notebook Computer	M20XX (X can be 0-9, A-Z or blank)	E142692-A193-	

File		Volume	Page	Date:
E142692	Index	X1	6	2013-01-11

		UL	
Notebook Computer	Satellite P500, Satellite P505, Satellite P507, Satellite Pro P500, Satellite Pro P505, Satellite Pro P507, Qosmio G60, Satellite P500D, Satellite P505D, Satellite P507D, Satellite Pro P500D, Satellite Pro P505D, Satellite Pro P507D, Qosmio X60, Qosmio X500, Qosmio X505	E142692-A196-UL	
Notebook Computer	Satellite P300, Satellite P305, Satellite Pro P300, EQUIUM P300, SATEGO P300, Satellite P300D, Satellite P305D, Satellite Pro P300D, EQUIUM P300D, SATEGO P300D	E142692-A198-UL	
Notebook Computer	Satellite M300, Satellite M305, Satellite Pro M300, Satellite L310, Satellite Pro L310, Satellite M300D, Satellite M305D, Satellite Pro M300D	E142692-A199-UL	
Notebook Computer	Satellite U400, Satellite U405, Satellite Pro U400, EQUIUM U400, PORTEGE M800, Satellite U400D, Satellite U405D, Satellite Pro U400D, EQUIUM U400D, PORTEGE M800D	E142692-A201-UL	
21.5 inch wide LCD TFT Monitor	HSTND-2791-Q, LCD-AD221F*-T***** (* = 0-9, A-Z, a-z or blank)	E142692-A207-UL	
Notebook Computer	PC-VX26AEXXXXXX, PC-VX25AEXXXXXX, PC-VX18LEXXXXXX (X=0-9, A-Z or blank)	E142692-A208-UL	
Server	QSSC-98JXXXX, QSSC-980XXXX, Eudemon NFA 2002, Eudemon NFA 2005, Eudemon NFA 2009 (X may be any alphanumeric character or blank)	E142692-A210-UL	
Notebook Computer	Satellite T130, Satellite T130D, Satellite T135, Satellite T135D, Satellite T137, Satellite T137D, Satellite Pro T130, Satellite Pro T130D, PORTEGE T130, PORTEGE T130D, dynabook MX.	E142692-A211-UL	
Notebook Computer	P31XX (X can be 0-9,A-Z or blank)	E142692-A212-UL	
Server	UCS C200 XX and UCS C210 XX, where X can be any alphanumeric character or blank for marketing purpose, no impact to safety.	E142692-A213-UL	
Notebook Computer	Satellite T110, Satellite T115, Satellite T117, Satellite T110D, Satellite T115D, Satellite T117D, Satellite Pro T110, Satellite Pro T115, Satellite Pro T117, Satellite Pro T110D, Satellite Pro T115D, Satellite Pro T117D, PORTEGE T110, PORTEGE T110D, dynabook MX (X = 0-9, A-Z or blank, except for X.)	E142692-A216-UL	
Notebook Computer	P30XX (X can be 0-9, A-Z or blank.)	E142692-A220-UL	
Server	QSSC-S4R	E142692-A222-UL	
Port Replicator	FPCPR96, FPCPR97, FPCPR101, FPCPR120	E142692-A228-UL	
Netbook Computer	ON8X (where X can be 0-9, A-Z, or blank for marketing purpose and no impact safety related critical components and constructions), P10, MH330	E142692-A229-UL	
Notebook PC	LH700xxxx, S710xxxx, L700xxxxx, SH710xxxxx, (x = 0-9, A-Z, any symbol or blank.)	E142692-A230-UL	

File		Volume	Page	Date:
E142692	Index	X1	7	2013-01-11

LCD Monitor	UB3B, UB4A	E142692-A233-UL	
Server	1230Ri	E142692-A236-UL	
Notebook Computer	Satellite L600, Satellite L640, Satellite L645, Satellite L600D, Satellite L645D, Satellite L640D, Satellite Pro L600, Satellite Pro L640, Satellite Pro L645, Satellite Pro L600D, Satellite Pro L640D, Satellite Pro L645D, (all model designation for the marketing purpose, only different model designations on the marking plate for different markets. No safety concern.)	E142692-A238-UL	
Notebook Computer	(1) Models for construction A: Satellite L650, Satellite L650D, Satellite L655, Satellite L655D, Satellite Pro L650, Satellite Pro L650D, Satellite Pro L655, Satellite Pro L655D (2) Models for construction B: Satellite L750, Satellite L755, Satellite L750D, Satellite L755D, Satellite Pro L750, Satellite Pro L750D, Satellite L650, Satellite L655, dynabook T351, dynabook T451	E142692-A239-UL	
Notebook Computer	NL2XX (X = 0-9, A-Z, or blank).	E142692-A240-UL	
LCD Monitor	UB5A	E142692-A244-UL	
Accessory, Communication Camera	TY-CC10W	E142692-A245-UL	
Notebook Computer	A530...., AH530....(the first "." = "/" or blank, other "." = alphanumeric character or blank) (all model designation for the marketing purpose, only different model designations on the marking plate for different markets. No safety concern.)	E142692-A246-UL	
Virtual Display Client	SR270	E142692-A250-UL	
LCD Display Monitor	WBZH (for trademark TEChviEw); LR617 (for trademark MITSUBISHI) VS11895 (for trademark Viewsonic)	E142692-A251-UL	
LCD Display Monitor	WJZS, DL660, VS11915, BDL4631Vxxx , BDL4625Exxx and BDL4635Exxx (x= any characters or blank), BDL4640E	E142692-A252-UL	
LCD Monitor	DX-245W (X=0-9, A-Z, a-z or blank), LCD24KAL, VL2418W, WDXXXX (X=0-9, A-Z, a-z or blank), WDZA, WDZF. LCD24XXXXX, PBM_V240XX, DS-XXXX (X=any character or blank) DP836***(*=0-9, A-Z, a-z, or blank)	E142692-A253-UL	
LCD monitor	WLZR, BDL5231V*** (Which "***" = any character or blank), DT851	E142692-A254-UL	
LCD Display Monitor	WHZS, DR854, BDL4251X (X=0-9, A-Z or blank)	E142692-A255-UL	
Server	UCS C460 XY, where X=A-Z, Y=1-9	E142692-A258-UL	

File		Volume	Page	Date:
E142692	Index	X1	8	2013-01-11

Notebook Computer	LH530.... (where the dots can be 0-9, A-Z, or blank for marketing purpose)	E142692-A259-UL	
Network Switch	LB9A, LB9D	E142692-A263-UL	
LCD Monitor	VS12666	E142692-A265-UL	
Server	QSSC-S99, S210-X12MS.	E142692-A271-UL	
Wireless HDMI Transmitter/ PC Adapter and Wireless HDMI Receiver/ TV Adapter	HB556 (for Wireless HDMI Transmitter) HSTNN-QR01 (for PC Adapter) and HB557 (for Wireless HDMI Receiver) HSTNN-QR02 (for TV Adapter)	E142692-A272-UL	
Server	QSSC-S99Q	E142692-A274-UL	
LCD Commercial Display	VS13512	E142692-A278-UL	
Notebook Computer	A531yxxx and AH531yxxx (y="/" or blank, x=alphanumeric character or blank)	E142692-A280-UL	
Notebook Computer	Satellite E300, Satellite E305, Satellite E340, Satellite E345	E142692-A281-UL	
Network Switch	LB8, FS-548B, LB9, FS-248B-DPS, LB8D, LY2	E142692-A285-UL	
Server	BX400	E142692-A287-UL	
Notebook Computer	Satellite L700, Satellite Pro L700, Satellite L700D, Satellite Pro L700D, Satellite L740, Satellite Pro L740, Satellite L740D, Satellite Pro L740D, Satellite L745, Satellite L745D	E142692-A289-UL	
Server	QSSC-X5-2E, QSSC-X5-2H, QSSC-X5-2Q	E142692-A290-UL	
Notebook Computer	Satellite Pro L730, Satellite L730, Satellite L735	E142692-A291-UL	
Tablet PC; HANNSpad	QV3A, HSG1194	E142692-A292-UL	
LCD Display Monitor	BDL5571V, LCD-110Q-PRO-55	E142692-A293-UL	
LCD Display Monitor	D2010	E142692-A297-UL	
Listed Accessory - Video Call Camera	HW-CAMERA-1	E142692-A298-UL	
Storage unit	DNS 1700	E142692-A299-UL	
Laptop Computer (OLPC)	XO-1.5HS, XO-1.75HS, XO-4 HS, XO-4 HS Touch	E142692-A300-UL	
55 inch LCD PC	INF5520	E142692-A303-UL	
Server	QSSC-98U	E142692-A309-UL	
LCD Display Monitor	BDL5545E**, " * " can be A-Z ,0-9 or blank for Marking purpose, only different model designations on the marking plated for different markets without safety concern	E142692-A312-UL	
Listed Accessory -	Xfinity Telepresence Camera	E142692-A314-	

File		Volume	Page	Date:
E142692	Index	X1	9	2013-01-11

Camera		UL	
LCD Display Monitor	BDL4251X(X= 0-9, A-Z or blank) for Marking purpose, only different model designations on the marking plated for different markets without safety concern	E142692-A315-UL	
LCD Display Monitor	D2043	E142692-A317-UL	
Tablet	TOSHIBA AT200	E142692-A318-UL	
Server	QSSC-98L, QSSC-2ML, QSSC-2MK	E142692-A321-UL	
Notebook Computer	Satellite U840, Satellite U845, Satellite U800	E142692-A323-UL	
Listed Accessory - TV Camera	TY-CC20W	E142692-A326-UL	
Server	S810-X52L, S810-X52LR, S800-X52T	E142692-A328-UL	
Notebook Computer	L532yxxx, LH532yxxx (the "y" in Model Name can be "/" or blank; the "x" can be alphanumeric character or blank, for marking used only)	E142692-A329-UL	
Convertible Tablet PC	Portege M930	E142692-A330-UL	
Notebook Computer	A532yxxx, AH532yxxx, AH562yxxx, AH4xyx, A562yxxx (the "y" in Model Name can be "/" or blank; the "x" can be alphanumeric character or blank, for marking used only)	E142692-A331-UL	
Notebook Computer	Satellite L830, Satellite L835, Satellite Pro L830, dynabook N532	E142692-A332-UL	
Notebook Computer	TravelMate P243 series, ZQW* (The " * " can be 0-9, A-Z or blank for marketing purpose, only different model designations on the marking plate for different markets. No Safety concern.	E142692-A333-UL	
Notebook Computer	Satellite L800, Satellite L805, Satellite L840. Satellite L845, Satellite Pro L800, Satellite Pro L805, Satellite Pro L840. Satellite Pro L845, Satellite M800, Satellite M805, Satellite M840. Satellite M845, Satellite C800, Satellite C805, Satellite C840. Satellite C845, Satellite Pro C800, Satellite Pro C805, Satellite Pro C840. Satellite Pro C845, dynabook B342, dynabook T442, dynabook B242, Satellite S840, Satellite Pro S840, Satellite S845, Satellite Pro S845	E142692-A334-UL	
Notebook PC	K45xxxx, A45xxxx, R400xxxx,(the "x" can be 0-9,A-Z or blank for marketing purpose no safety concern)	E142692-A335-UL	
Server	S210-X22RQ, S200-X22TQ, S215-X22KQ	E142692-A336-UL	
Server	S210-X12RS, S200-X12TS and S215-X12KS	E142692-A338-UL	
Notebook Computer	Satellite L840D, Satellite L800D, Satellite L845D, Satellite L805D, Satellite Pro L840D, Satellite Pro L800D, Satellite Pro L805D, Satellite Pro L845D, Satellite C840D, Satellite C800D, Satellite C805D, Satellite C845D, Satellite Pro C840D, Satellite Pro C800D, Satellite Pro C805D, Satellite Pro C845D,	E142692-A343-UL	

File		Volume	Page	Date:
E142692	Index	X1	10	2013-01-11

	Satellite S840D, Satellite Pro S840D, Satellite S845D, Satellite Pro S845D.		
Video Phone	INV100	E142692-A346-UL	
AIO PC	CA24	E142692-A348-UL	
AIO PC	CA27	E142692-A349-UL	
Laptop PC	CT14, CT15	E142692-A350-UL	
Laptop PC	CN15	E142692-A351-UL	
Notebook Computer	Satellite U840W; Satellite U845W; Satellite U800W; dynabook R542	E142692-A352-UL	
Network Switch	LY4	E142692-A353-UL	
Server	S400-X44E	E142692-A356-UL	
Listed Accessory - Communication Camera	NW-1000	E142692-A358-UL	
Server	S100-L11SL	E142692-A360-UL	
Smart Display	VS15006, DA220HQL	E142692-A361-UL	
Network Switch	T3040-LY3	E142692-A362-UL	
Storage	M4600H	E142692-A363-UL	
Server	S910-X31B	E142692-A365-UL	

CERTIFICATE OF COMPLIANCE

Certificate Number 20130111-E142692
Report Reference E142692-A138-UL
Issue Date 2013-JANUARY-11

Issued to: QUANTA COMPUTER INC
188 WEN-HWA 2ND RD
KUEI SHAN HSIANG
TAOYUAN HSIEN 333 TAIWAN

**This is to certify that
representative samples of**

INFORMATION TECHNOLOGY EQUIPMENT INCLUDING
ELECTRICAL BUSINESS EQUIPMENT

Laptop Computer (OLPC)
Models XO-1.75, XO-4, XO-4 TOUCH

Have been investigated by UL in accordance with the
Standard(s) indicated on this Certificate.


Standard(s) for Safety:

UL 60950-1, 2nd Edition, Information Technology
Equipment - Safety - Part 1: General Requirements;
CSA C22.2 No. 60950-1-07, Information Technology
Equipment - Safety - Part 1: General Requirements

Additional Information:

See the UL Online Certifications Directory at
www.ul.com/database for additional information

Only those products bearing the UL Listing Mark for the US and Canada should be considered as being covered by UL's Listing and Follow-Up Service meeting the appropriate requirements for US and Canada.

The UL Listing Mark for the US and Canada generally includes: the UL in a circle symbol with "C" and "US" identifiers:  the word "LISTED"; a control number (may be alphanumeric) assigned by UL; and the product category name (product identifier) as indicated in the appropriate UL Directory.

Look for the UL Listing Mark on the product.



William R. Carney, Director, North American Certification Programs
UL LLC

Any information and documentation involving UL Mark services are provided on behalf of UL LLC (UL) or any authorized licensee of UL. For questions, please contact a local UL Customer Service Representative at www.ul.com/contactus



UL TEST REPORT AND PROCEDURE

Standard:	UL 60950-1, 2nd Edition, 2011-12-19 (Information Technology Equipment - Safety - Part 1: General Requirements) CSA C22.2 No. 60950-1-07, 2nd Edition, 2011-12 (Information Technology Equipment - Safety - Part 1: General Requirements)
Certification Type:	Listing
CCN:	NWQQ, NWQQ7 (Information Technology Equipment Including Electrical Business Equipment)
Product:	Laptop Computer (OLPC)
Model:	XO-1.75, XO-4, XO-4 TOUCH
Rating:	12 Vdc, 2 A or 13.5Vdc, 1.85A (Optional)
Applicant Name and Address:	QUANTA COMPUTER INC 188 WEN-HWA 2ND RD KUEI SHAN HSIANG TAOYUAN HSIEN 333 TAIWAN

This is to certify that representative samples of the products covered by this Test Report have been investigated in accordance with the above referenced Standards. The products have been found to comply with the requirements covering the category and the products are judged to be eligible for Follow-Up Service under the indicated Test Procedure. The manufacturer is authorized to use the UL Mark on such products which comply with this Test Report and any other applicable requirements of UL LLC ('UL') in accordance with the Follow-Up Service Agreement. Only those products which properly bear the UL Mark are considered as being covered by UL's Follow-Up Service under the indicated Test Procedure.

The applicant is authorized to reproduce the referenced Test Report provided it is reproduced in its entirety.

Any information and documentation involving UL Mark services are provided on behalf of UL LLC (UL) or any authorized licensee of UL.

Prepared by: Charlie Chou

Reviewed by: Allen Huang

Supporting Documentation

The following documents located at the beginning of this Procedure supplement the requirements of this Test Report:

- A. Authorization - The Authorization page may include additional Factory Identification Code markings.
- B. Generic Inspection Instructions -
 - i. Part AC details important information which may be applicable to products covered by this Procedure. Products described in this Test Report must comply with any applicable items listed unless otherwise stated in the body of this Test Report.
 - ii. Part AE details any requirements which may be applicable to all products covered by this Procedure. Products described in this Test Report must comply with any applicable items listed unless otherwise stated in the body of each Test Report.
 - iii. Part AF details the requirements for the UL Certification Mark which is not controlled by the technical standard used to investigate these products. Products are permitted to bear only the Certification Mark(s) corresponding to the countries for which it is certified, as indicated in each Test Report.

Product Description

Electronic components are mounted on PWB, which is enclosed by plastic enclosure and accompanied with three USB ports, one Card Reader.

The OLPC XO is a laptop computer system consisting of a (a) laptop computer, (b) direct-plug in power supply (power adapter) and (c) removable battery pack. The OLPC XO is intended for use as a child development tool primarily by children five years of age and older. In addition to IEC 60950-1, CSA/UL 60950-1 and EN 60950-1, applicable parts of ASTM F 963, 2007 Edition, Standard Consumer Safety Specification on Toy Safety, were applied to address use of the product by the intended user group.

Model Differences

Models XO-4, XO-4 TOUCH are similar to model XO-1.75 except for motherboard and touch panel function.

Technical Considerations

- Equipment mobility : transportable
- Connection to the mains : not directly connected to the mains
- Operating condition : continuous
- Access location : operator accessible
- Over voltage category (OVC) : OVC I
- Mains supply tolerance (%) or absolute mains supply values : No direct connection
- Tested for IT power systems : No
- IT testing, phase-phase voltage (V) : N/A
- Class of equipment : Class III (supplied by SELV)
- Considered current rating of protective device as part of the building installation (A) : 20A
- Pollution degree (PD) : PD 2
- IP protection class : IP 20
- Altitude of operation (m) : less than 2000 meters
- Altitude of test laboratory (m) : less than 2000 meters
- Mass of equipment (kg) : 1.49 (max.)
- The product was submitted and evaluated for use at the maximum ambient temperature (Tma)

permitted by the manufacturer's specification of: 45°C

- The product was investigated to the following additional standards: 1. UL Standard for Safety for Electric Toys, UL 696, Ninth Edition, Dated March 15, 1996, Revisions: This Standard contains revisions through and including June 12, 2006., 2. ASTM F963, 2007 Edition, Standard Consumer Safety Specification on Toy Safety.,
- The following circuit locations (with circuit/schematic designation) were investigated as a limited power source (LPS): USB ports, MIC, Head phone
- The power supply in this equipment was: Investigated to IEC/UL 60950-1 2nd edition. As part of the investigation of this product, the power supply and its test report were reviewed and found to comply with IEC/UL 60950-1 2nd edition, amendment 1.
- LEDs provided in the product are considered low power devices: Yes
- Technical Considerations - Engineering Considerations: The OLPC XO is a laptop computer system consisting of a (a) laptop computer, (b) direct-plug in power supply (power adapter) and (c) removable battery pack. The OLPC XO is intended for use as a child development tool primarily by children five years of age and older. In addition to IEC 60950-1, CSA/UL 60950-1 and EN 60950-1, applicable parts of ASTM F 963, 2007 Edition, Standard Consumer Safety Specification on Toy Safety, were applied to address use of the product by the intended user group.

Additional Information

- The label is a draft of an artwork for marking plate pending approval by National Certification Bodies and it shall not be affixed to products prior to such an approval.

- Model: XO-1.75 => CPU information: VIA / C7-M / 1.0 GHz.


- Model: XO-1.75 => CPU information: Marvell ARMADA 610 / 1.0 GHz.

- Model: XO-4, XO-4 TOUCH => CPU information: Marvell: MMP3 / 1.2 GHz.

Additional Standards

The product fulfills the requirements of: NA

Markings and instructions

Clause Title	Marking or Instruction Details
Power rating - Company identification	Listee's or Recognized company's name, Trade Name, Trademark or File Number
Power rating - Model	Model Number
Power rating - Ratings	Ratings (voltage, frequency/dc, current)
Symbols - Stand-by switch	"Stand-by" to be indicated by  (60417-2-IEC-5009)

Replaceable batteries	"CAUTION: Risk of Explosion if Battery is replaced by an Incorrect Type. Dispose of Used Batteries According to the Instructions."
User Manual	See enclosure ID 6-01 for detail.
Special Instructions to UL Representative	
N/A	

Production-Line Testing Requirements						
<u>Electric Strength Test Special Constructions - Refer to Generic Inspection Instructions, Part AC for further information.</u>						
Model	Component	Removable Parts	Test probe location	V rms	V dc	Test Time, s
N/A						
<u>Earthing Continuity Test Exemptions - This test is not required for the following models:</u>						
All Models						
<u>Electric Strength Test Exemptions - This test is not required for the following models:</u>						
All Models						
<u>Electric Strength Test Component Exemptions - The following solid-state components may be disconnected from the remainder of the circuitry during the performance of this test:</u>						
<u>Sample and Test Specifics for Follow-Up Tests at UL</u>						
Model	Component	Material	Test	Sample(s)	Test Specifics	
N/A						

1.5.1	TABLE: list of critical components					Pass
Object/part or Description	Manufacturer/ trademark	type/model	technical data	Product Category CCN(s)	Required Marks of Conformity	Supplement ID
01 Connectors and Receptacles (secondary ELV/SELV circuits)	--	Metal/Plastic	Copper alloy pins housed in bodies of plastic rated V-2 min.	QMFZ2, ECBT2, RTRT2	UL	
02 Insulating Tubing/Sleeving	Various	Various	FEP, PTFE, PVC, TFE, neoprene, polyimide or marked VW-1; 105 degree C, 300V.	UZFT2, YDPU2, YDTU2	UL	
03 Label	Various	Various	60 degree C if Max. surface temperature not specified	PGDQ2 or PGJ12	UL	
04. Wiring, internal, secondary	Various	Various	FEP, PTFE, PVC, TFE, neoprene, polyimide or marked VW-1; min 30 V, 60 degree C, routed away from primary uninsulated live parts, and unless insulated for the highest voltage involved, from insulated primary circuit wiring	AVLV2	UL	
05 Internal Plastic Part Materials	Various	Various	Min. V-2	QMFZ2	UL	
06 Printed Wiring Board	Various	Various	V-1 min., rated min. 105 degree C	ZPMV2	UL	
07 Plastic Material of Flexible Printed Wiring	Various	Various	V-2 min. or VTM-2 min. when no components mounted on surface	QMFZ2 or QMTS2	UL	
08 Enclosure	CHI MEI CORPORATION	PC-540	V-0, 1.5 mm min., 60 degree C, overall 231.0 x 244.0 x 32.8 (with LCD panel) or 231.0 x 244.0 x 22.0 (without LCD panel area)	QMFZ2	UL	3-06
09 Power Adaptor (Alternate) (For Rating 12V/2A only)	Bestec Power Electronics Co., Ltd	NA0241WAA (NAwww1WyA)#	I/P: 100-240Vac, 1A, 50/60Hz; O/P: 12Vdc/2A (Class II)	QQGQ	UL	
09a Power Adaptor	Bestec Power	BT-AG250SDFxy	I/P: 100-240Vac, 50/60 Hz,	QQGQ	UL	

(Alternate) (For Rating 13.5V/1.85A only)	Electronics Co., Ltd	(X="-" , y=A-Z or blank. For marketing purpose	0.4A; O/P: 13.5V, 1.85A			
09b. Power Adaptor (Alternate) (For Rating 13.5V/1.85A only)	Darfon Electronics Corp.	BB0J-C	I/P: 100-240Vac, 50/60 Hz, 1A; O/P: 13.5V, 1.85A	QQGQ	UL	
09c. Power Adaptor (Alternate) (For Rating 12V/2A only)	Darfon Electronics Corp.	BU24-1203	I/P: 100-240Vac, 0.7A, 50/60Hz; O/P: 12Vdc/2A (Class II)	QQGQ	UL	
10 Battery pack	BYD	CL1	6.5 V, 3,100 mAh (Li-ion)	NWGQ, BBFS	UL	
10a Battery pack (Alternate)	Sylva Industries Ltd Rechargeable Battery Div	NTA2488	6.0 V, 3,000 mAh (Ni-MH)	NWGQ, BBFS	UL	
10b Battery pack (Alternate)	Sylva Industries Ltd Rechargeable Battery Div	NTA2490	7.3 V, 2800 mAh (Li-Fe)	NWGQ, BBFS	UL	
11 Speakers	--	--	Rated 8 ohm, max. 1.0 Watt, max. two provided	--	--	3-12
12 Keyboard	Various	Various	Min. flame HB	QMFZ2	UL	
13 LCD panel	--	--	7.5" TFT-LCD type, LED backlight module.	--	--	
14 Printed wiring board, flexible	Various	Various	Min V-2 or VTM-2, 105 degree C	ZPMV2, ZPKX2	UL	
Following Components for Model XO-1.75 only	--	--	See Enclosure Id 3-28, 3-29 for motherboard and other details. Use with Battery pack :BYD / CL1 only Use with Adapter (Bestec) only.	--	--	
15. Mother board (for model XO-1.75)	--	--	--	--	--	
15-1 Wireless LAN Card	--	--	3.3Vdc	--	--	
15-2. Protect IC U9 (for USB use)	Diodes Inc	AP2171, AP2161	2.7-5.5Vdc, Cont. Current 1.0A, Prot. Current 2.0A	QVGS2	UL	
15-3. R.T.C. Battery	HITACHI MAXELL	ML1220	3 Vdc; Max Charging Voltage	BBCV2	UL	

(alternate)	ENERGY LTD		12 Vdc; Max Charging Current 100 mA			
15-3-1. RTC Battery protect components	--	--	The RTC battery is protected by following: resistors (R35, R27/1kohm) (R26/4.7Kohm) (R23/1.2Kohm), a transistor (Q1) and a diode (D14).	--	--	
Following Components for Models XO-4, XO-4 TOUCH only	--	--	See Enclosure Id 3-32, 3-33 for motherboard and other details. Use with Battery pack :BYD / CL1 only Use with Adapter (Bestec) only.	--	--	
15a. Mother board (XO- 4, XO-4 TOUCH)	--	--	--	--	--	
15a-1 Wireless LAN Card	--	--	3.3Vdc	--	--	
15a-2. Protect IC U9 (for USB use)	Diodes Inc	AP2171, AP2161	2.7-5.5Vdc, Cont. Current 1.0A, Prot. Current 2.0A	QVGS2	UL	
15a-3. R.T.C. Battery (alternate)	HITACHI MAXELL ENERGY LTD	ML1220	3 Vdc; Max Charging Voltage 12 Vdc; Max Charging Current 100 mA	BBCV2	UL	
15a-3-1. RTC Battery protect components	--	--	The RTC battery is protected by following: resistors (R359, R377/1kohm) (R368/1.2Kohm) (R360/4.7Kohm), a transistor (Q39) and a diode (D19).	--	--	

Enclosures

<u>Type</u>	<u>Supplement Id</u>	<u>Description</u>
Photographs	3-06	NB top view
Photographs	3-07	NB front open view
Photographs	3-08	NB left side view
Photographs	3-09	NB right side view
Photographs	3-10	NB bottom view with battery pack A32-V2
Photographs	3-12	NB bottom internal view
Photographs	3-28	(XO-1.75) Motherboard-1
Photographs	3-29	(XO-1.75) Motherboard-2
Photographs	3-30	NB bottom internal view(alternate)
Photographs	3-31	Panel Module with Touch Function
Photographs	3-32	Component side of Motherboard (For models XO-4, XO-4 TOUCH only)
Photographs	3-33	Trace side of Motherboard (For models XO-4, XO-4 TOUCH only)
Diagrams		
Schematics + PWB		
Manuals	6-01	User Manual
Miscellaneous	7-04	Datasheets for UL 696
Miscellaneous	7-05	Datasheets ASTM F963
Miscellaneous	7-06	Table 2.5 - Limited Power Source Measurement (Not for FUS investigation)













File 2007-11- Page 7 of 26 Report Reference # E142692-A138-UL
E142692 06
Vol. X1
Sec. A138
PHO-13
Issued:
2007-11-06

sue Date:

Revision 2007-11-
Date 06

The following supplement has been removed from this report:

Enclosure: Photographs
ID: 3-13
Description: PCB top view

File 2007-11- Page 8 of 26 Report Reference # E142692-A138-UL
E142692 06
Vol. X1
Sec. A138
PHO-14
Issued:
2007-11-06

sue Date:

Revision 2007-11-
Date 06

The following supplement has been removed from this report:

Enclosure: Photographs
ID: 3-14
Description: PCB bottom view

File 2007-11- Page 9 of 26 Report Reference # E142692-A138-UL
E142692 06
Vol. X1
Sec. A138
PHO-24
Issued:
2007-11-06

sue Date:

Revision 2007-11-
Date 06

The following supplement has been removed from this report:

Enclosure: Photographs
ID: 3-24
Description: (XO-1.5) Internal -1

File 2007-11- Page 10 of 26 Report Reference # E142692-A138-UL
E142692 06
Vol. X1
Sec. A138
PHO-25
Issued:
2007-11-06

sue Date:

Revision 2007-11-
Date 06

The following supplement has been removed from this report:

Enclosure: Photographs
ID: 3-25
Description: (XO-1.5) Internal -2

File 2007-11- Page 11 of 26 Report Reference # E142692-A138-UL
E142692 06
Vol. X1
Sec. A138
PHO-26
Issued:
2007-11-06

sue Date:

Revision 2007-11-
Date 06

The following supplement has been removed from this report:

Enclosure: Photographs
ID: 3-26
Description: (XO-1.5) Motherboard -1

File 2007-11- Page 12 of 26 Report Reference # E142692-A138-UL
E142692 06
Vol. X1
Sec. A138
PHO-27
Issued:
2007-11-06

sue Date:

Revision 2007-11-
Date 06

The following supplement has been removed from this report:

Enclosure: Photographs
ID: 3-27
Description: (XO-1.5) Motherboard -2

File 2007-11- Page 13 of 26 Report Reference # E142692-A138-UL
E142692 06
Vol. X1
Sec. A138
PHO-28
Issued:
2007-11-06

sue Date:

Revision 2007-11-
Date 06

The following supplement has been removed from this report:

Enclosure: Photographs
ID: 3-28
Description: (XO-1.75) Motherboard-1

File 2007-11- Page 14 of 26 Report Reference # E142692-A138-UL
E142692 06
Vol. X1
Sec. A138
PHO-29
Issued:
2007-11-06

sue Date:

Revision 2007-11-
Date 06

The following supplement has been removed from this report:

Enclosure: Photographs
ID: 3-29
Description: (XO-1.75) Motherboard-2

File 2007-11- Page 15 of 26 Report Reference # E142692-A138-UL
E142692 06
Vol. X1
Sec. A138
PHO-30
Issued:
2007-11-06

sue Date:

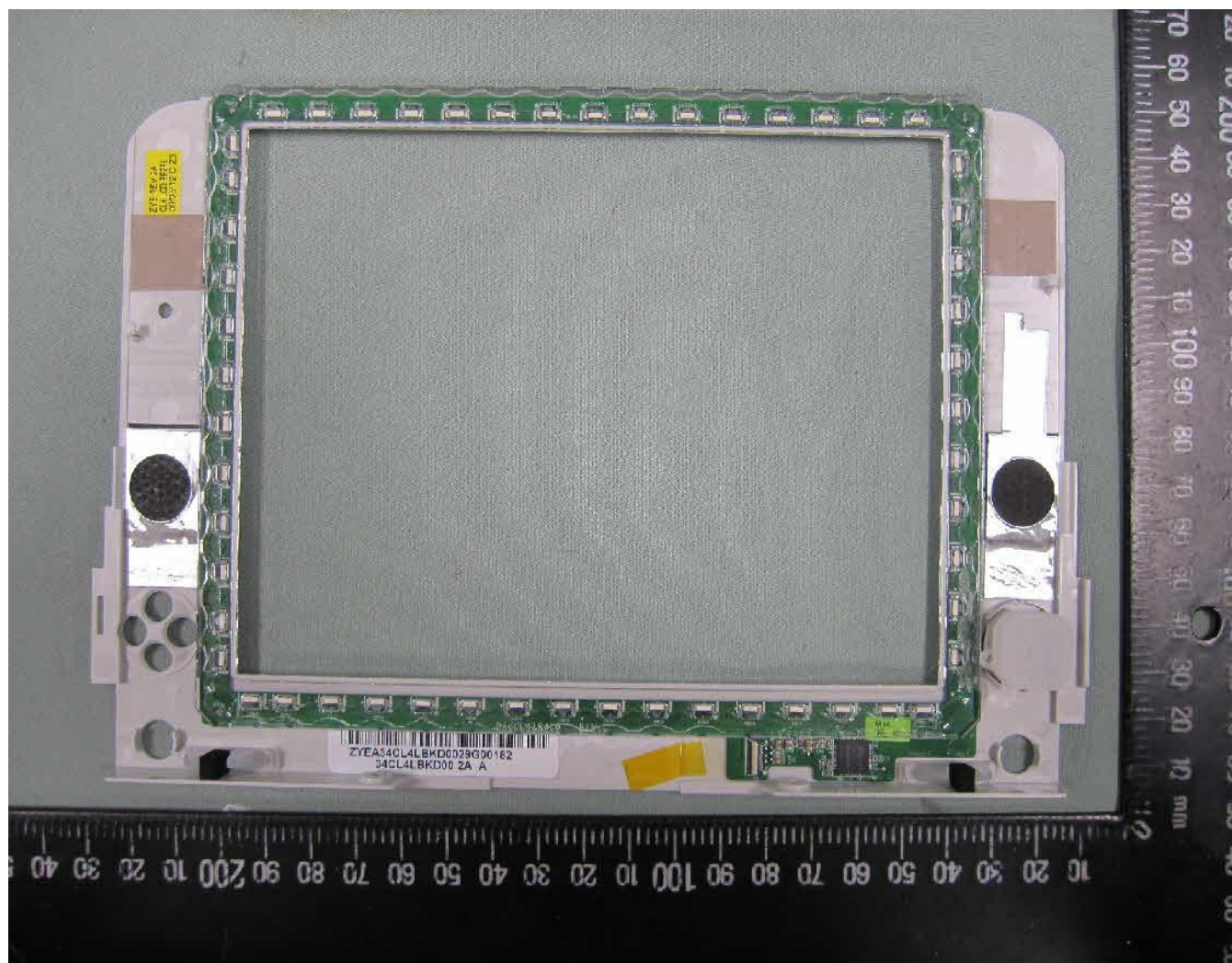
Revision 2007-11-
Date 06

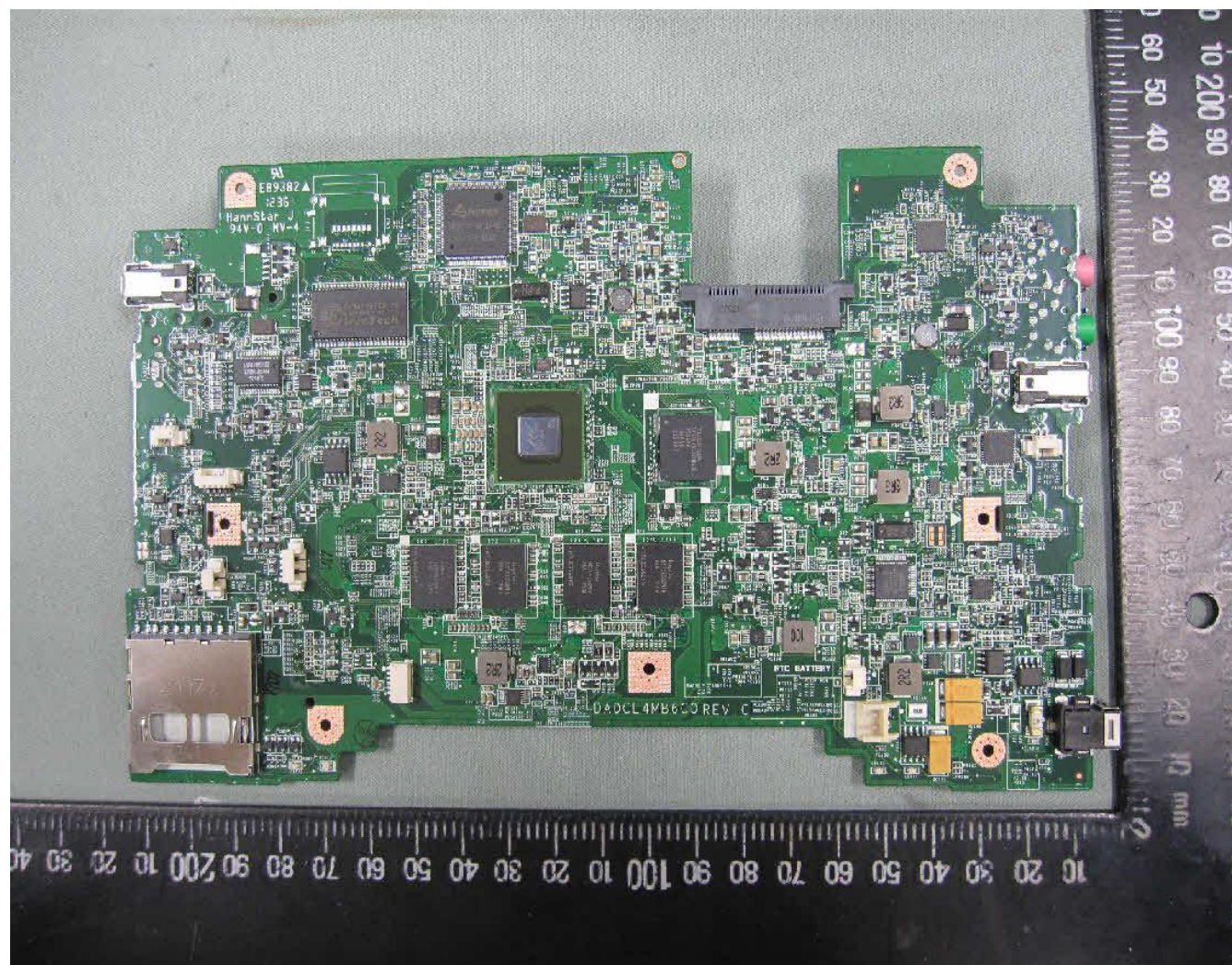
The following supplement has been removed from this report:

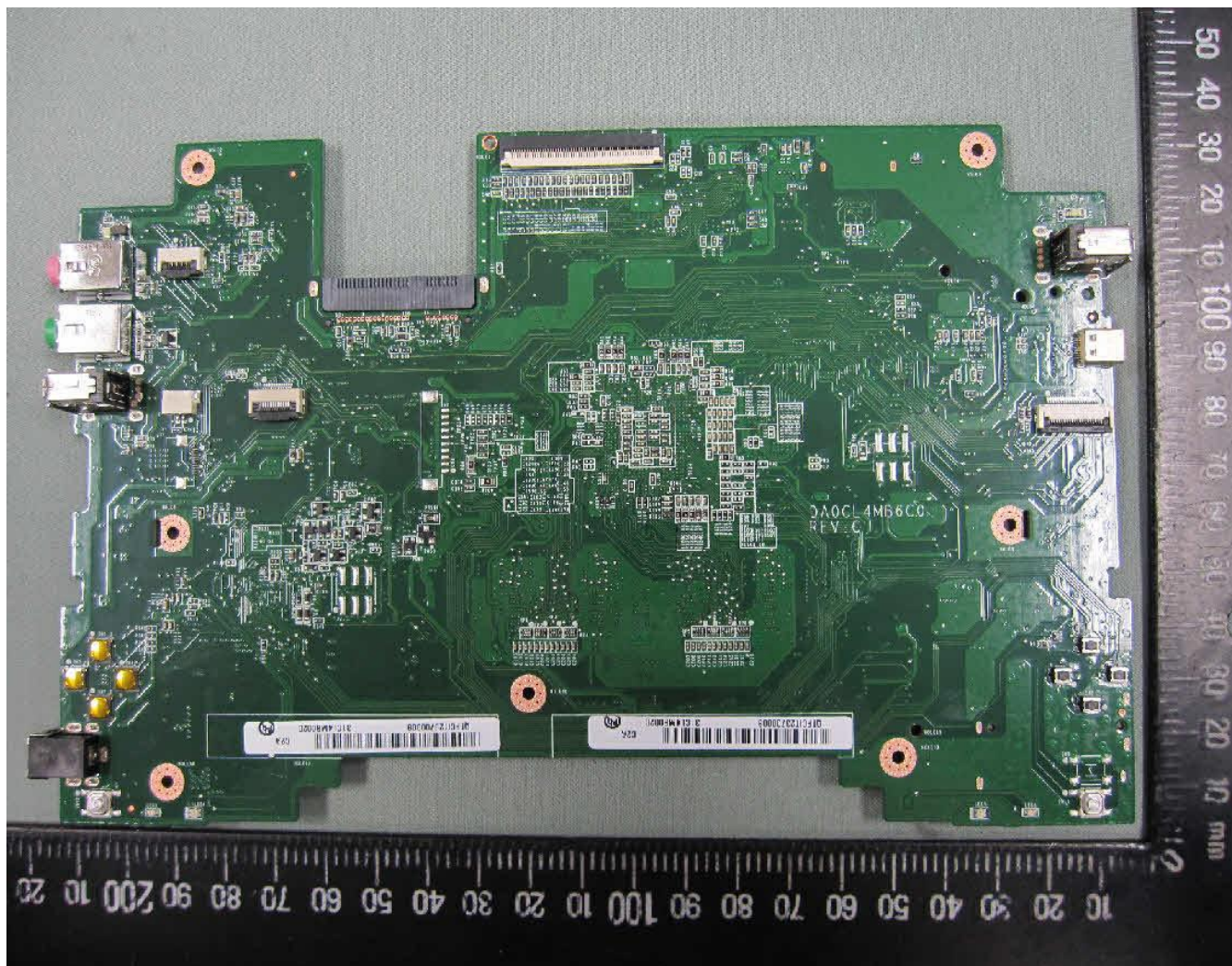
Enclosure: Photographs

ID: 3-30

Description: NB bottom internal view(alternate)







Safety

Your XO laptop is checked for safety against the European Union's RoHS Directive, which ensures that it contains no hazardous or unsafe materials. Its NiMH batteries contain no toxic heavy metals.

Virus protection

As you may know, it is possible for some computers to be "infected" with a "virus" when connected to other computers. Viruses are programs that can copy themselves and often cause problems for the computer that runs them. The XO laptop cannot be easily infected by viruses, because of its unique security system that isolates each Activity. Currently you do not need to install separate anti-virus software or firewall software.

Internet safety

Please realize that the XO laptop is designed for easy-to-use wireless connection to the Internet and other networks. While the Internet lets you access lots of useful information and talk to lots of people, not all of the information or people are good and safe. You should be careful and ask your teacher or parent for help and protection while browsing on the Internet.

Parents and teachers, we recommend that you filter Internet content as appropriate for your school district or home, stay in touch with what the students are reading and finding on the Internet, and ask your Internet Service Provider for assistance with filtering what parts of the Internet your XO can access.

Usage Precautions

- The XO laptop is intended for primary school students and children with minimum age of seven (7) years old and above.
- As with all electrical products, precautions should be observed during handling and use to prevent electric shock. The power supply (adapter) should not be handled by the children under the age of seven (7) years old.
- As with all electrical products, precautions should be observed during handling and use to prevent electric shock. The child at least of age of seven (7) and above, should be very careful while handling the power supply (adapter), in particular plugging the power supply into the receptacle (power outlet).
- The XO laptop should not be placed on the bare skin (lap) of the child for long periods. The laptop should be placed on another surface, like desk/tabletop, if intending to use it for more than a few minutes.
- The XO laptop should not be left in the rain or subjected to exposure to water. If cleaning is necessary do not immerse in water; wipe clean with damp cloth.
- The XO laptop should not be dropped, crushed (stepped on) or otherwise abused.
- The Children should be careful with the interconnect cable (wiring) between the power supply (adapter) and laptop, in particular as a potential trip hazard.
- An adult should inspect the XO laptop periodically for damage, and replace if necessary. Similarly, if a child notices damaged/broken parts, this should be reported to the teacher immediately so that the damaged parts can be replaced.

CAUTIONS

CAUTION – ELECTRICALLY OPERATED PRODUCT. THIS IS NOT A TOY. TO AVOID RISK OF ELECTRIC SHOCK OR FIRE IT SHOULD NOT BE USED WITHOUT ADULT SUPERVISION OR PLACED WHERE SMALL CHILDREN CAN REACH IT.

CAUTION – ELECTRICALLY OPERATED PRODUCT. Not recommended for children under seven (7) years of age. As with all electrical products, precautions should be observed during handling and use of electrical products to reduce the risk of electric shock.

Published : 2012-02-22
License : GPLv2+

XO-1.5/XO-1.75: OLPC USER'S MANUAL

File 2007-11- Page 22 of 26 Report Reference # E142692-A138-UL
E142692 06
Vol. X1
Sec. A138
MIS-04
Issued:
2007-11-06

sue Date:

Revision 2007-11-
Date 06

The following supplement has been removed from this report:

Enclosure: Misc
ID: 7-04
Description: Datasheets for UL 696

File 2007-11- Page 23 of 26 Report Reference # E142692-A138-UL
E142692 06
Vol. X1
Sec. A138
MIS-05
Issued:
2007-11-06

sue Date:

Revision 2007-11-
Date 06

The following supplement has been removed from this report:

Enclosure: Misc
ID: 7-05
Description: Datasheets ASTM F963

File 2007-11- Page 24 of 26 Report Reference # E142692-A138-UL
E142692 06
Vol. X1
Sec. A138
MIS-06
Issued:
2007-11-06

sue Date:

Revision 2007-11-
Date 06

The following supplement has been removed from this report:

Enclosure: Misc
ID: 7-06
Description: Table 2.5 - Limited Power Source Measurement (Not for FUS
investigation)

File 2007-11- Page 25 of 26 Report Reference # E142692-A138-UL
E142692 06
Vol. X1
Sec. A138
MIS-07
Issued:
2007-11-06

sue Date:

Revision 2007-11-
Date 06

The following supplement has been removed from this report:

Enclosure: Misc
ID: 7-07
Description: Client Instrument list

File 2007-11- Page 26 of 26 Report Reference # E142692-A138-UL
E142692 06
Vol. X1
Sec. A138
MIS-08
Issued:
2007-11-06

sue Date:

Revision 2007-11-
Date 06

The following supplement has been removed from this report:

Enclosure: Misc
ID: 7-08
Description: Multi-factories Declaration

Test Record No. 1

-The manufacturer submitted a sample representing production of representative production samples of Notebook Computer (OLPC), Model XO-1.

-The results of this investigation, including construction review and testing, indicate that the products evaluated comply with the applicable requirements in the U.S. and Canadian (Bi-National) Standard for Safety of Information Technology Equipment, CAN/CSA-C22.2 No. 60950-1-03, First Edition, including revisions through revision date July 7, 2006, UL 60950-1, First Edition, including revisions through revision date October 31, 2007.

-The following tests conducted in accordance with UL60950-1, 1st Edition, Revised Date October 31, 2007, Information Technology Equipment-Safety-Part 1: General Requirements were considered representative of the same tests required by Canadian Standards, CNA/CSA-C22.2 No.60950-1-03, 1st Edition, Revised Date July 7, 2006, Information Technology Equipment-Safety-Part 1: General Requirements.

- All IEC/EN/UL60950-1 tests were conducted by Underwriters Laboratories Taiwan Co., Ltd.

- This product was evaluated to "COATINGS AND PLATINGS", in accordance with the Standard for Standard for Safety for Electric Toys for UL 696, Ninth Edition, Dated March 15, 1996, Revisions: This Standard contains revisions through and including June 12, 2006.

- This product was evaluated to "FLAMMABILITY - COMPLETE PRODUCTS", "ABUSE TESTS", "Abusive Overcharge Test", "IMPACT TESTS", "COMPONENT TORQUE TEST", "COMPONENT TENSION TEST", "COMPRESSION TEST", "PACKAGING FILM" and "BATTERY OPERATED TOYS" in accordance with the Standard for Standard Consumer Safety Specification on Toy Safety for ASTM F963, 2007 Edition.

- All UL 696 and ASTM F963 tests were conducted by Underwriters Laboratories of Canada (ULC)

-Unless otherwise indicated, all tests were conducted on Model XO-1.

-Test results reported relate only to the items tested.

The following tests were conducted:

Test	Testing Location/Comments
------	---------------------------

Test results are valid only for the tested equipment. These tests are considered representative of the products covered by this Test Report. The test methods and results of the above tests have been reviewed and found to be in accordance with the requirements in the Standard(s) referenced at the beginning of this Test Report.

The following supplements are provided as a part of this Test Record. NOTE: These supplements are only available to the Applicant via the CDA system.

Type	Supplement Id	Description
	2-01	CRD
	2-02	Datasheets UL60950-1-1
	2-03	Datasheets UL60950-1-2

Test Record No. 2

- The manufacturer submitted a sample representing production of representative production samples of Laptop Computer (OLPC), Model XO-1 employing alternate Battery Pack manufacturer by Sylva Industries Ltd Rechargeable Battery Div., Li-Fe Battery Pack, Model: NTA2490, rated 7.3 Vdc, 2800mAh and Enclosure manufacturer by Chimei-Asahi Corporation(TPI), Model PC-540, rated V-0 , 1.5 mm min., 60 degree C.

- The results of this investigation, including construction review and testing, indicate that the products evaluated comply with the applicable requirements in the U.S. and Canadian (Bi-National) Standard for Safety of Information Technology Equipment, CAN/CSA-C22.2 No. 60950-1-03, First Edition, including revisions through revision date July 7, 2006, UL 60950-1, First Edition, including revisions through revision date October 31, 2007.

- The following tests conducted in accordance with UL60950-1, 1st Edition, Revised Date October 31, 2007, Information Technology Equipment-Safety-Part 1: General Requirements were considered representative of the same tests required by Canadian Standards, CNA/CSA-C22.2 No.60950-1-03, 1st Edition, Revised Date July 7, 2006, Information Technology Equipment-Safety-Part 1: General Requirements.

- All IEC/EN/UL60950-1 tests were conducted by Underwriters Laboratories Taiwan Co., Ltd.

- Unless otherwise indicated, all tests were conducted on Model XO-1.

- Only limited tests were performed on Model Model XO-1, employing alternate Battery Pack manufacturer by Sylva Industries Ltd Rechargeable Battery Div., Li-Fe Battery Pack, Model: NTA2490, rated 7.3 Vdc, 2800mAh and Enclosure manufacturer by Chimei-Asahi Corporation(TPI), Model PC-540, rated V-0 , 1.5 mm min., 60 degree C, due to testing previously performed on the subject unit.

-Test results reported relate only to the items tested.

The following tests were conducted:

Test	Testing Location/Comments
------	---------------------------

Test results are valid only for the tested equipment. These tests are considered representative of the products covered by this Test Report. The test methods and results of the above tests have been reviewed and found to be in accordance with the requirements in the Standard(s) referenced at the beginning of this Test Report.

The following supplements are provided as a part of this Test Record. NOTE: These supplements are only available to the Applicant via the CDA system.

Type	Supplement Id	Description
	2-04	CRD
	2-05	Datasheets

Test Record No. 3

- The manufacturer submitted representative production samples of Laptop Computer (OLPC), Model XO-1.5 employing the change list as below:

- (1) Add new Model designation XO-1.5 and alternate following items for new model only
- (2) Alt. Rating (12 Vdc, 2A)
- (3) Alt. Adaptor (Bestec, type NA0241WAA)
- (4) Alt. Motherboard (VIA CPU, type C7-M)

- Unless otherwise noted, all tests were conducted by Quanta Computer Inc., located in Tao Yuan, Taiwan under WTDP program.

- Only limited tests were performed on Model XO-1.5 because of similar in construction to Model XO-1, see UL Report reference No. E142692-A138 previously evaluated unit.

- Test results reported relate only to the items tested.

- The results of this investigation, including construction review and testing, indicate that the products evaluated comply with the applicable requirements in the U.S. and Canadian (Bi-National) Standard for Safety of Information Technology Equipment, Including Electrical Business Equipment, CAN/CSA-C22.2 No. 60950-1-03, First Edition, including revisions through revision date July 7, 2006, and UL 60950-1, First Edition, including revisions through revision date October 31, 2007. Any information and documentation involving UL Mark services are provided on behalf of Underwriters Laboratories Inc. (UL) or any authorized licensee of UL.

- The following tests conducted in accordance with UL60950-1, 1st Edition, Revised Date October 31, 2007, Information Technology Equipment-Safety- Part 1: General Requirements were considered representative of the same tests required by Canadian Standards, CAN/CSA-C22.2 No.60950-1-03, 1st Edition, Revised Date July 7, 2006, Information Technology Equipment-Safety-Part 1: General Requirements.

The following tests were conducted:

Test	Testing Location/Comments
------	---------------------------

Test results are valid only for the tested equipment. These tests are considered representative of the products covered by this Test Report. The test methods and results of the above tests have been reviewed and found to be in accordance with the requirements in the Standard(s) referenced at the beginning of this Test Report.

The following supplements are provided as a part of this Test Record. NOTE: These supplements are only available to the Applicant via the CDA system.

Type	Supplement Id	Description
Attachment	2-06	CRD
Datasheet	2-07	DataSheet

Test Record No. 4

- The manufacturer submitted representative production samples of Laptop Computer (OLPC), Model XO-1.5, for investigation.

- Unless otherwise noted, all tests were conducted by Quanta Computer Inc., located in Tao Yuan, Taiwan under WTDP program.

- Only limited tests were deemed necessary due to employing as followings:

- 1) Alternate Adapter (Bestec Power Electronics Co., Ltd, type BT-AG250SDFxy)
- 2) Alternate rating 13.5Vdc, 1.85A for Model XO-1.5.

- Only the following tests were deemed necessary.

The following tests were conducted:

Test	Testing Location/Comments
------	---------------------------

Test results are valid only for the tested equipment. These tests are considered representative of the products covered by this Test Report. The test methods and results of the above tests have been reviewed and found to be in accordance with the requirements in the Standard(s) referenced at the beginning of this Test Report.

The following supplements are provided as a part of this Test Record. NOTE: These supplements are only available to the Applicant via the CDA system.

<u>Type</u>	<u>Supplement Id</u>	<u>Description</u>
Datasheet	2-08	Datasheet
Attachment	2-09	CRD

Test Record No. 5

- The manufacturer submitted representative production samples of Laptop Computer (OLPC), Model XO-1.75, for investigation.

- Unless otherwise noted, all tests were conducted by Quanta Computer Inc., located in Tao Yuan, Taiwan under WTDP program.

- Only limited tests were deemed necessary due to employing as followings:

- 1) Alternate Model Name : XO-1.75
- 2) Alternate Mainboard for Model XO-1.75.

- Only the following tests were deemed necessary.

- The results of this investigation indicate that the products evaluated comply with the applicable requirements in the U.S. and Canadian (Bi-National) Standard for Information Technology Equipment - Safety - Part 1: General Requirements, CAN/CSA-C22.2 No. 60950-1-03 * UL 60950-1, First Edition, including revisions through revision date October 31, 2007. Any information and documentation involving UL Mark services are provided on behalf of Underwriters Laboratories Inc. (UL) or any authorized licensee of UL.

- The following tests conducted in accordance with UL60950-1, 1st Edition, Revised Date October 31, 2007, Information Technology Equipment-Safety-Part 1: General Requirements were considered representative of the same tests required by Canadian Standards, CAN/CSA-C22.2 No.60950-1-03, 1st Edition, Revised Date July 7, 2006, Information Technology Equipment-Safety-Part 1: General Requirements.

The following tests were conducted:

Test	Testing Location/Comments
------	---------------------------

Test results are valid only for the tested equipment. These tests are considered representative of the products covered by this Test Report. The test methods and results of the above tests have been reviewed and found to be in accordance with the requirements in the Standard(s) referenced at the beginning of this Test Report.

The following supplements are provided as a part of this Test Record. NOTE: These supplements are only available to the Applicant via the CDA system.

<u>Type</u>	<u>Supplement Id</u>	<u>Description</u>
Attachment	2-10	CRD
Datasheet	2-11	Test Datasheet

Test Record No. 6

- The manufacturer submitted representative production samples of Laptop Computer (OLPC), Model XO-1.75, for investigation.

- No tests were deemed necessary due to add two approved Adapters as below:

(1) upgrade standard from IEC/UL 60950-1 1st to IEC/UL 60950-1 2nd+A1

(2) Delete the Model XO-1 and XO-1.5 information.

(3) Add the Power Adapter (DARFON ELECTRONICS CORP / BB0J-C)

- Due to no additional measurement and Test, No CRD required.

The following tests were conducted:

Test	Testing Location/Comments
Input: Single-Phase (1.6.2)	
Limited Power Source Measurements (2.5)	
Stability (4.1)	
Steady Force (4.2.1 - 4.2.4)	
Impact (4.2.5, 4.2.1, Part 22 10.2)	
Stress Relief (4.2.7, 4.2.1)	
Battery (4.3.8)	
Lithium Battery Reverse Current Measurement (4.3.8)	
Heating (4.5.1, 1.4.12, 1.4.13)	
Component Failure (5.3.1, 5.3.4, 5.3.7)	
Overload of Operator Accessible Connector (5.3.7)	

Test results are valid only for the tested equipment. These tests are considered representative of the products covered by this Test Report. The test methods and results of the above tests have been reviewed and found to be in accordance with the requirements in the Standard(s) referenced at the beginning of this Test Report.

Issue Date: 2007-11-06

Page 7 of 8

Report Reference #

E142692-A138-UL

Revision Date: 2013-01-11

Test Record

Test Record No. 7

- The manufacturer submitted a representative production sample of Laptop Computer (OLPC), model XO-1.75 for investigation, no tests were deemed necessary due to employing one RC adapter, Darfon Electronics Corp., model BU24-1203, the rating is identical to the adapter in original report.

Test Record No. 8

- The manufacturer submitted representative production samples of Laptop Computer (OLPC), Model XO-1.75, XO-4, XO-4 TOUCH for employing the alternate mainboard, panel module (for touch function), and new model designation (XO-4, XO-4 TOUCH).

- Unless otherwise noted, all tests were conducted by Quanta Computer Inc., located in Tao Yuan, Taiwan under WTDP/WMT program.

- Only limited tests were deemed necessary due to employing the alternation above due to testing previously performed on the subject unit.

The following tests were conducted:

Test	Testing Location/Comments
End Product Reference Page	
General Guidelines	
Input: Single-Phase (1.6.2)	
Lithium Battery Reverse Current Measurement (4.3.8)	

Test results are valid only for the tested equipment. These tests are considered representative of the products covered by this Test Report. The test methods and results of the above tests have been reviewed and found to be in accordance with the requirements in the Standard(s) referenced at the beginning of this Test Report.

The following supplements are provided as a part of this Test Record. NOTE: These supplements are only available to the Applicant via the CDA system.

<u>Type</u>	<u>Supplement Id</u>	<u>Description</u>
Attachment	2-12	CRD
Datasheet	2-13	Datasheet