

Dis assembly of a top portion of an XO Laptop.

**Before disassembling the XO make sure you unplug the power adapter and remove the battery.**



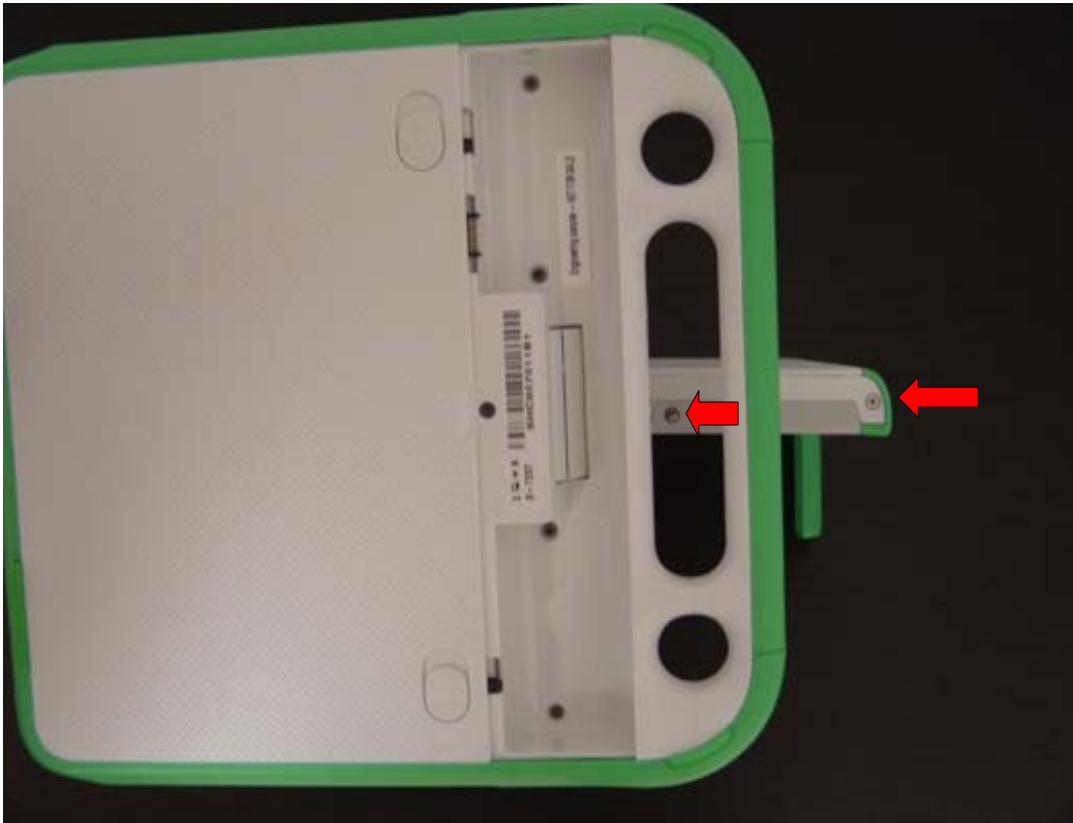
The bottom portion of the XO Laptop only holds the keyboard, touch pad and the battery. All other components such as the motherboard, wifi card and storage drive are located in the top portion behind the LCD screen.

To gain access to the motherboard first we have to remove the LCD screen.

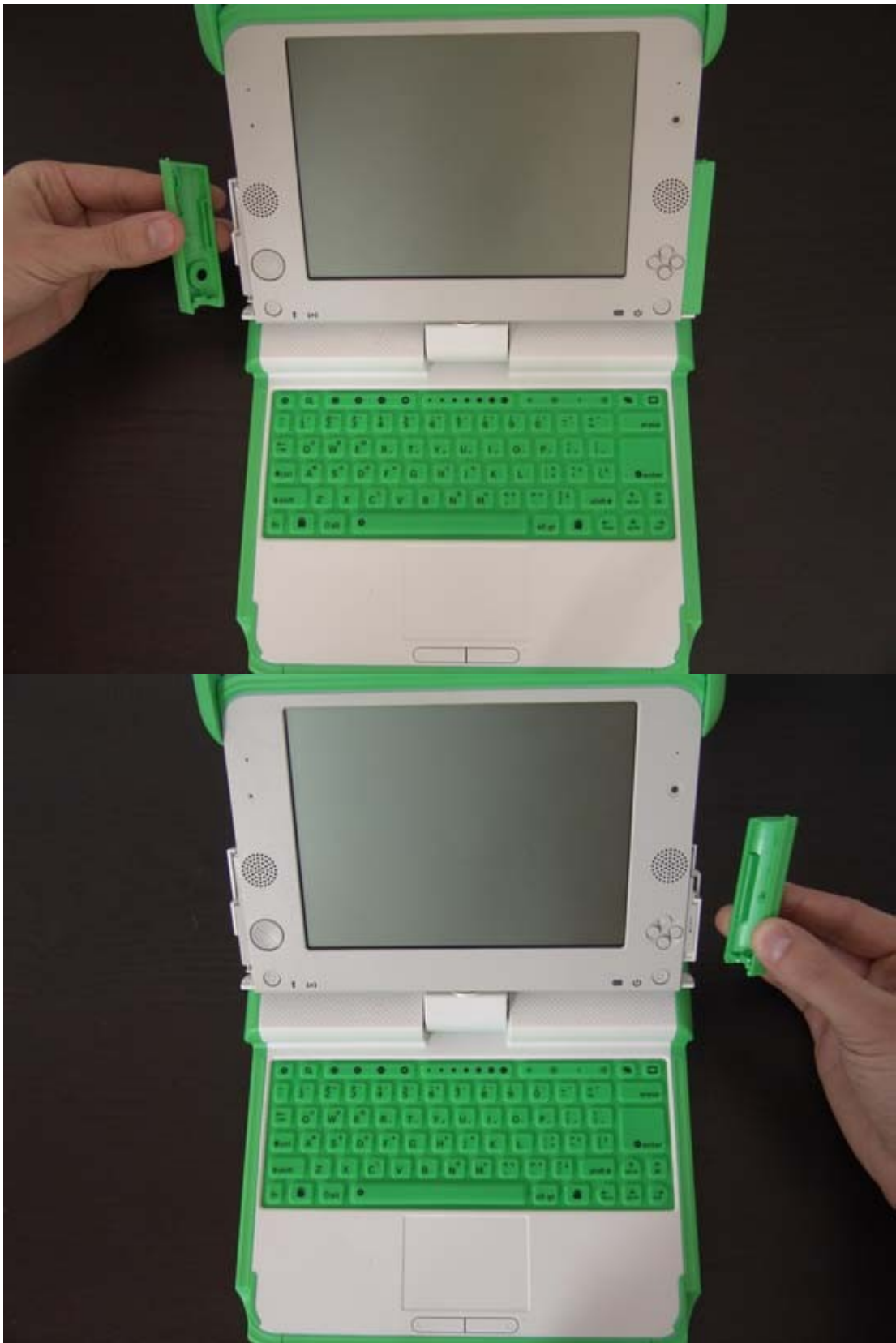
Lift up the screen and rotate it 90° in either direction. This will give you access to two screws at the bottom of the screen. Unscrew both of them.



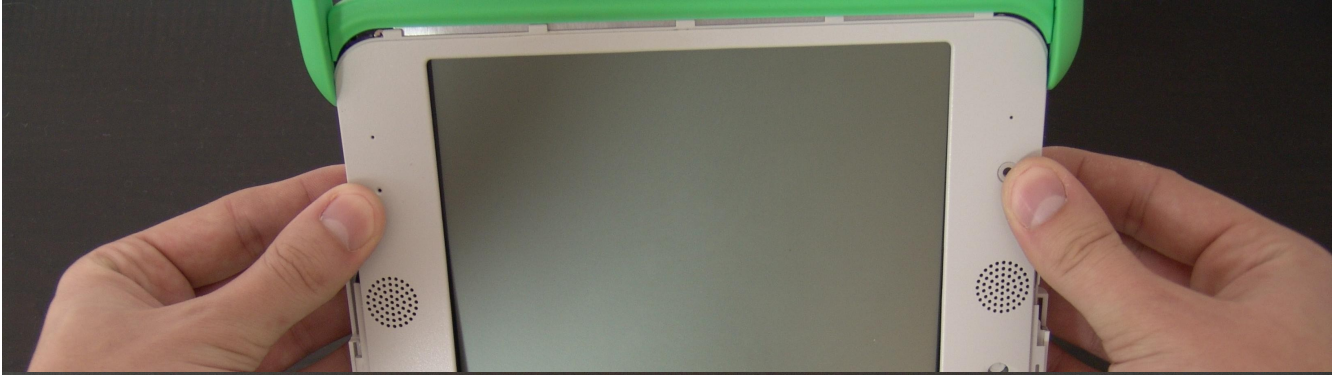
Rotate the screen 180° in the opposite direction and remove the two screws on the other side.



Remove the two green plastic peaces on both sides of the screen by sliding them up gently.



Remove the screen frame by slightly sliding it down and lifting it up.

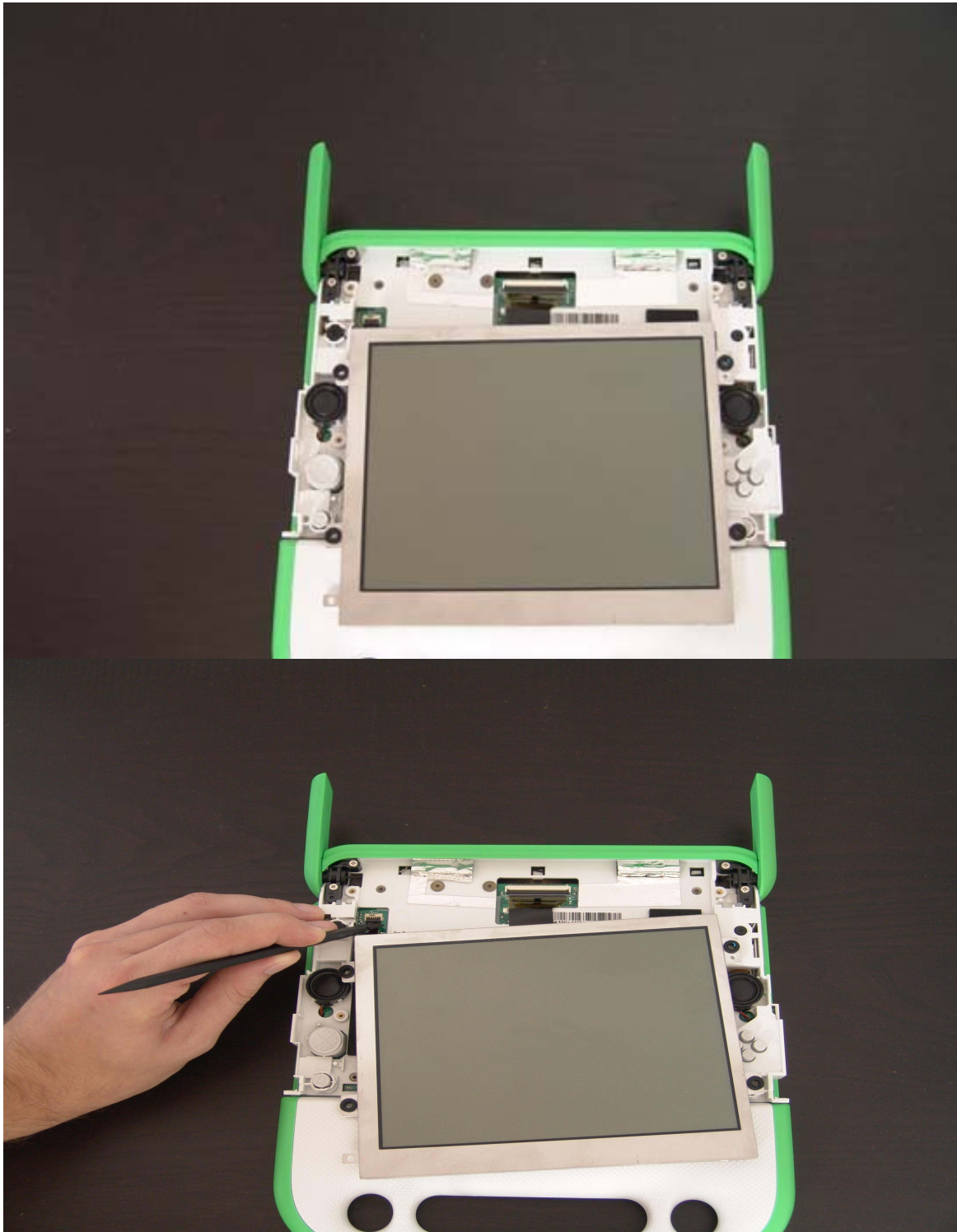


With the screen frame removed you now need to undo the four screws holding the LCD screen in place.

With the four screws removed you can now lift up the screen.



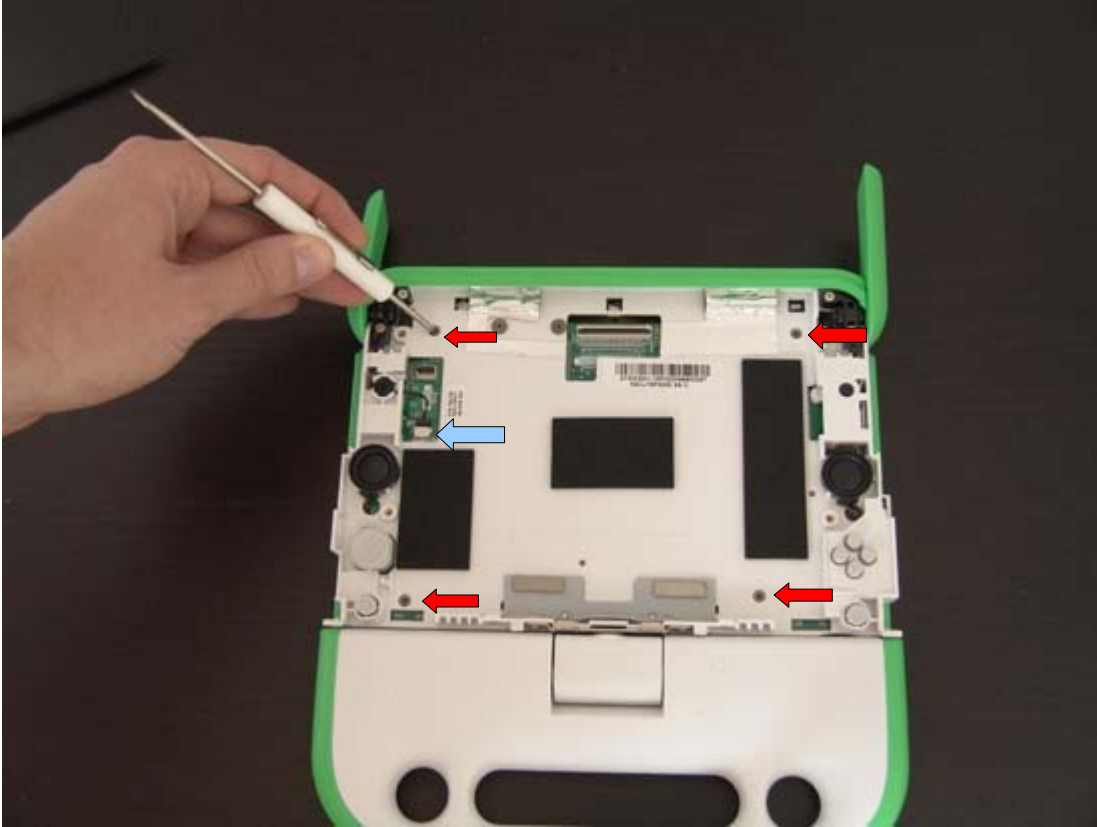
By sliding the screen down you will gain access to two ribbons that connect the LCD screen to the motherboard. The ribbons are clamped down with a black plastic wedge. With a flat head screwdriver or a plastic tool gently pry-up the plastic wedge and slide out the ribbons.





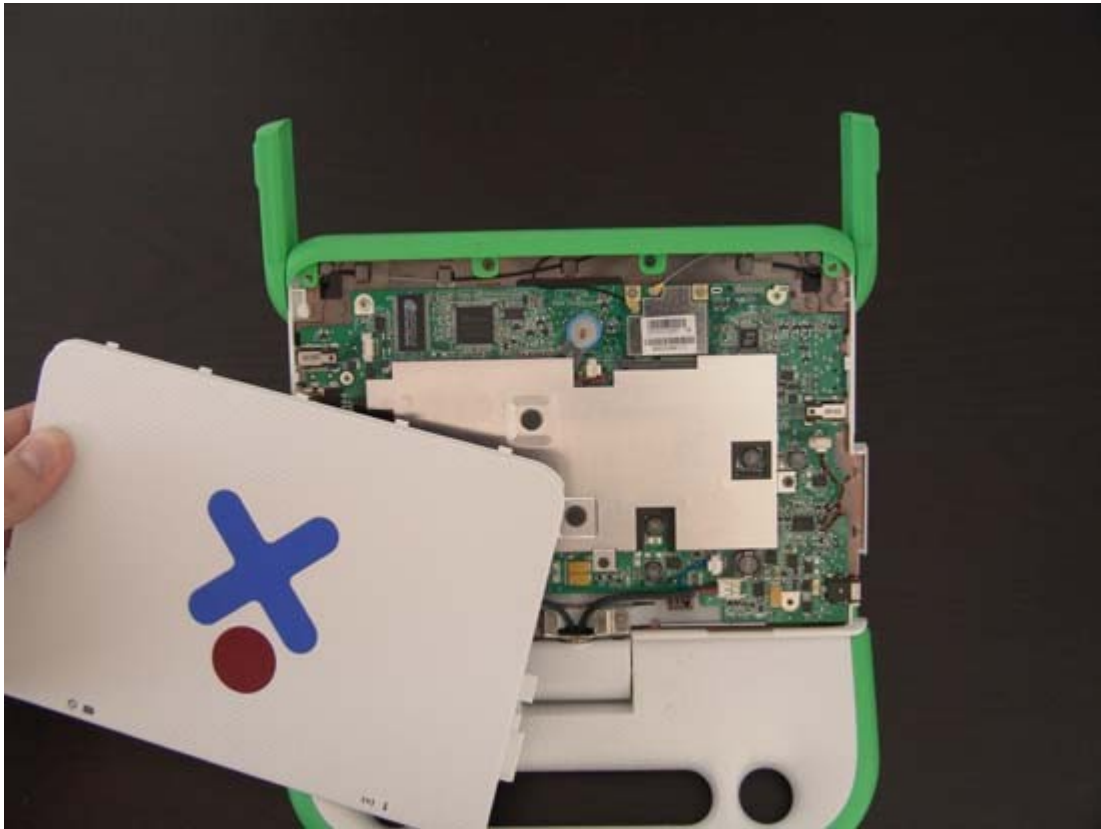


With the LCD screen removed you now have access to four screws holding the back cover. Unscrew all four to gain access to the mother board.

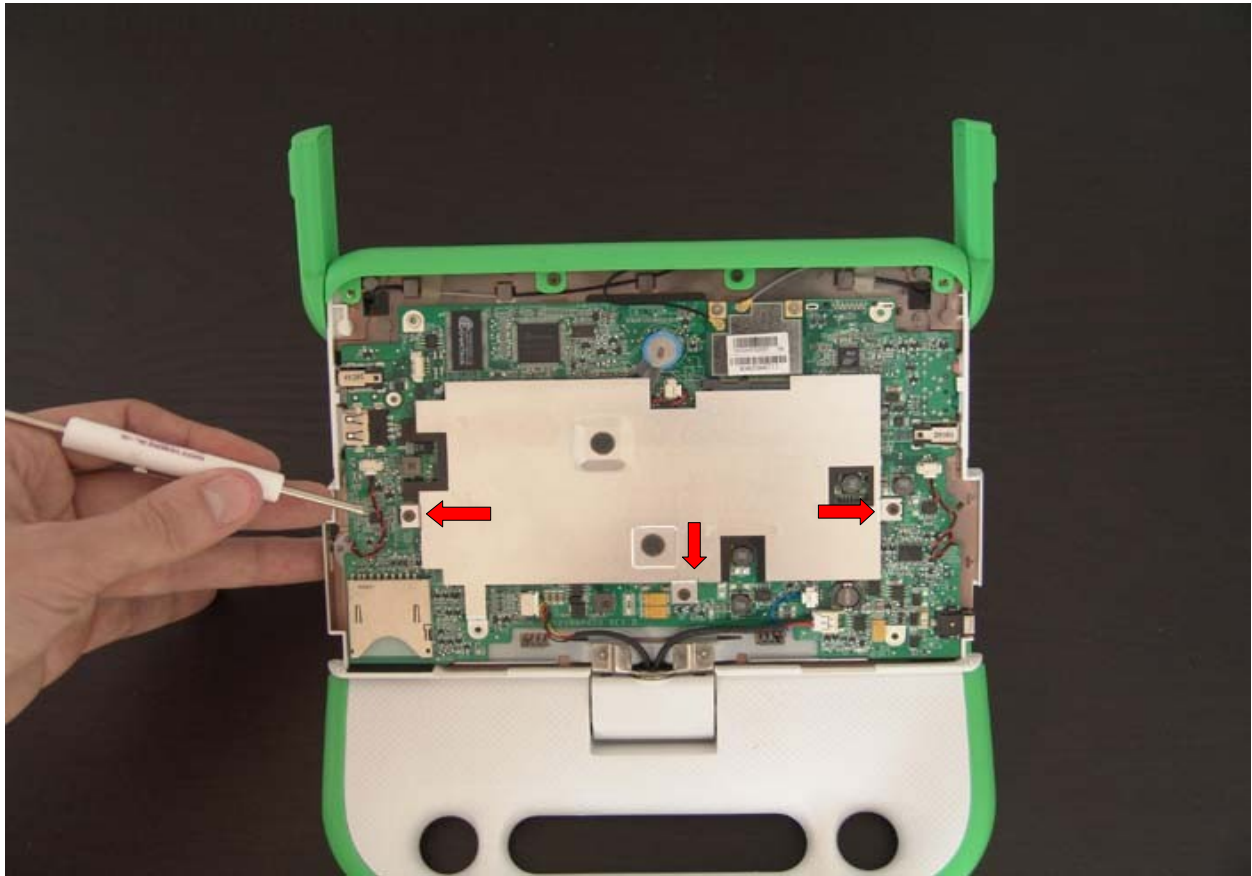


If you need to completely remove the mother board, disconnect the microphone marked with the blue arrow in the above photo.

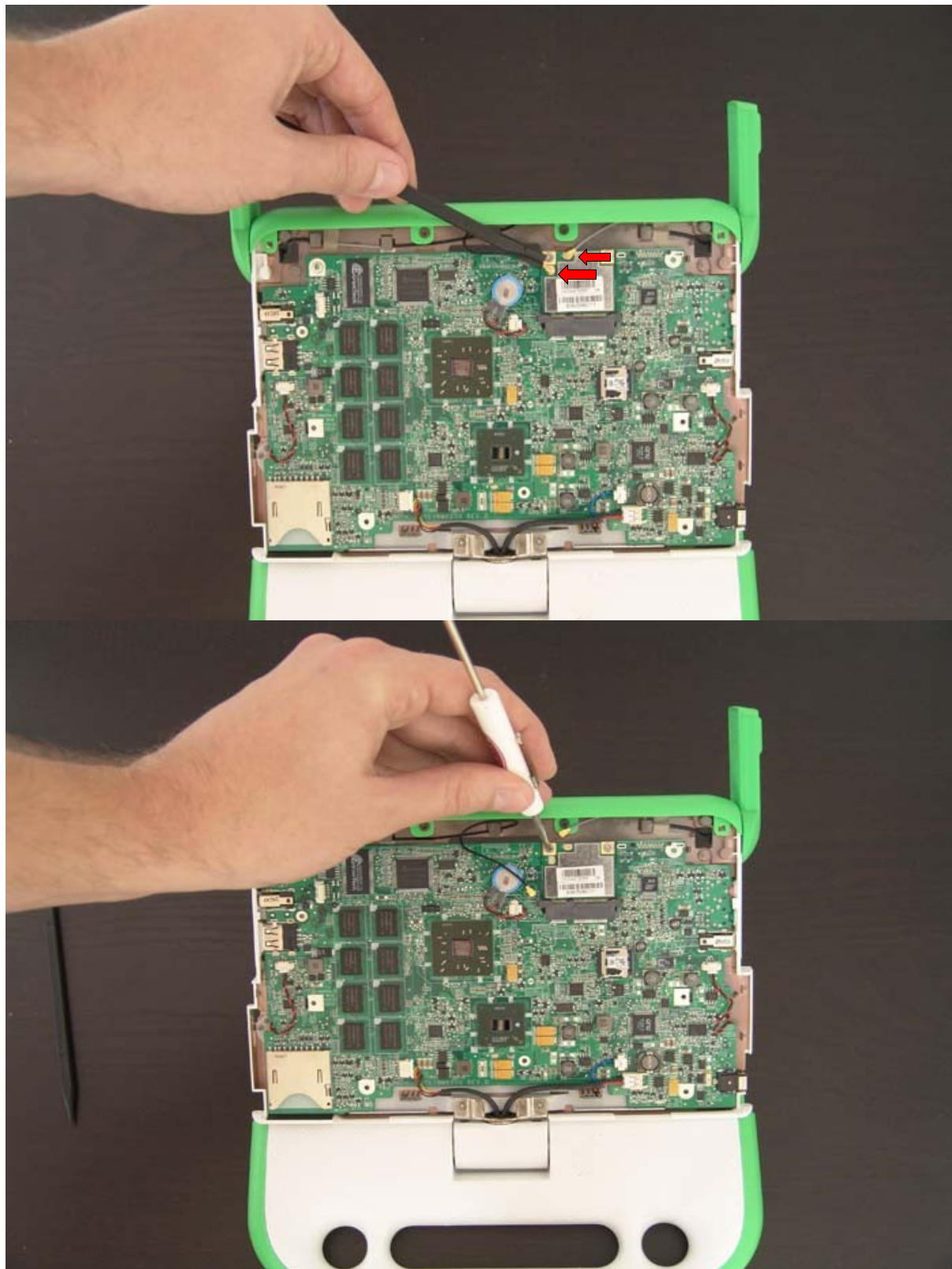
Once all four screws are out you should be able to remove the back cover by slightly sliding it down.



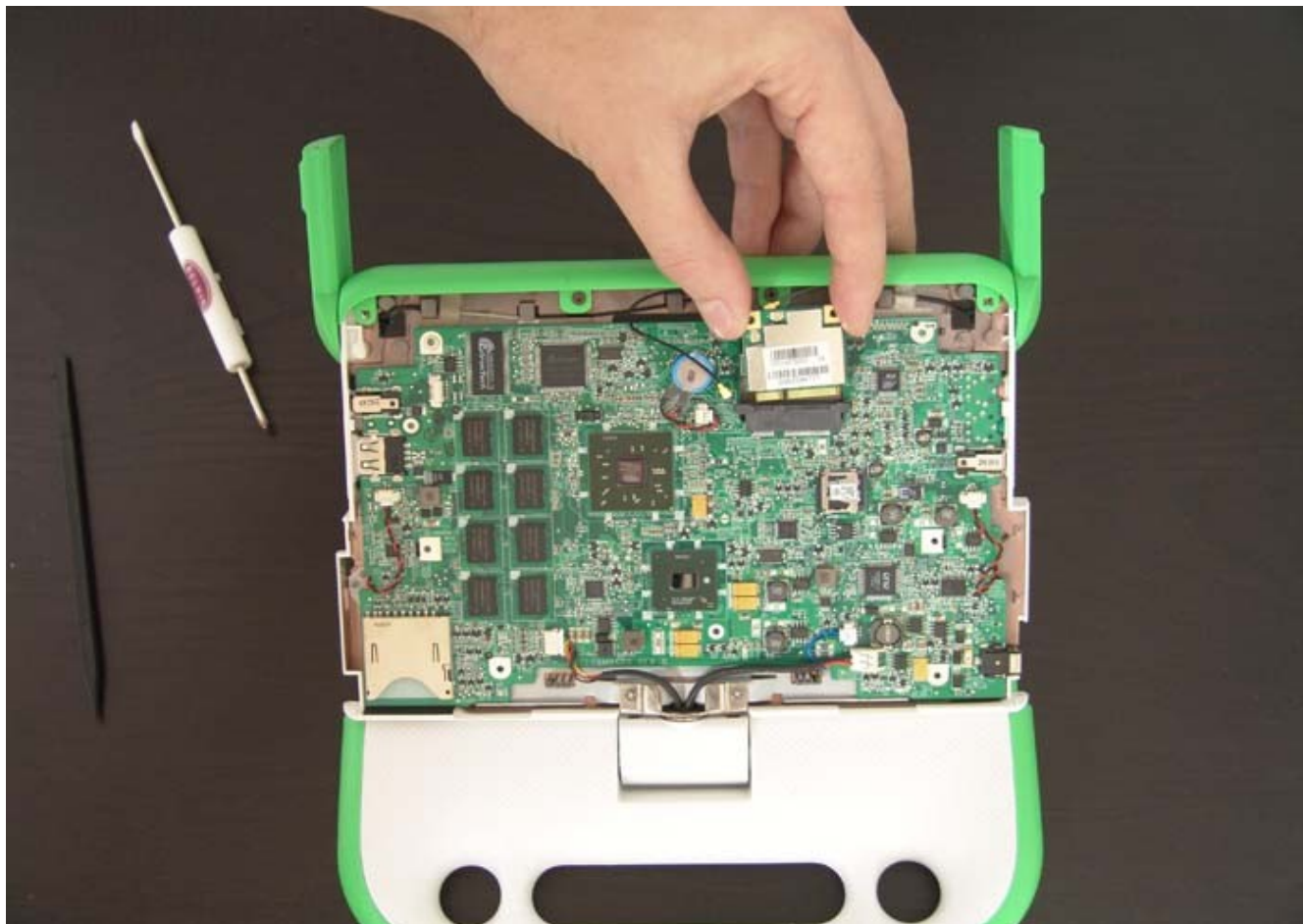
To gain access to the storage drive, which is in a form of a micro SD card you will have to remove the metal shield from the motherboard. To do this unscrew the three screws holding the plate in place.



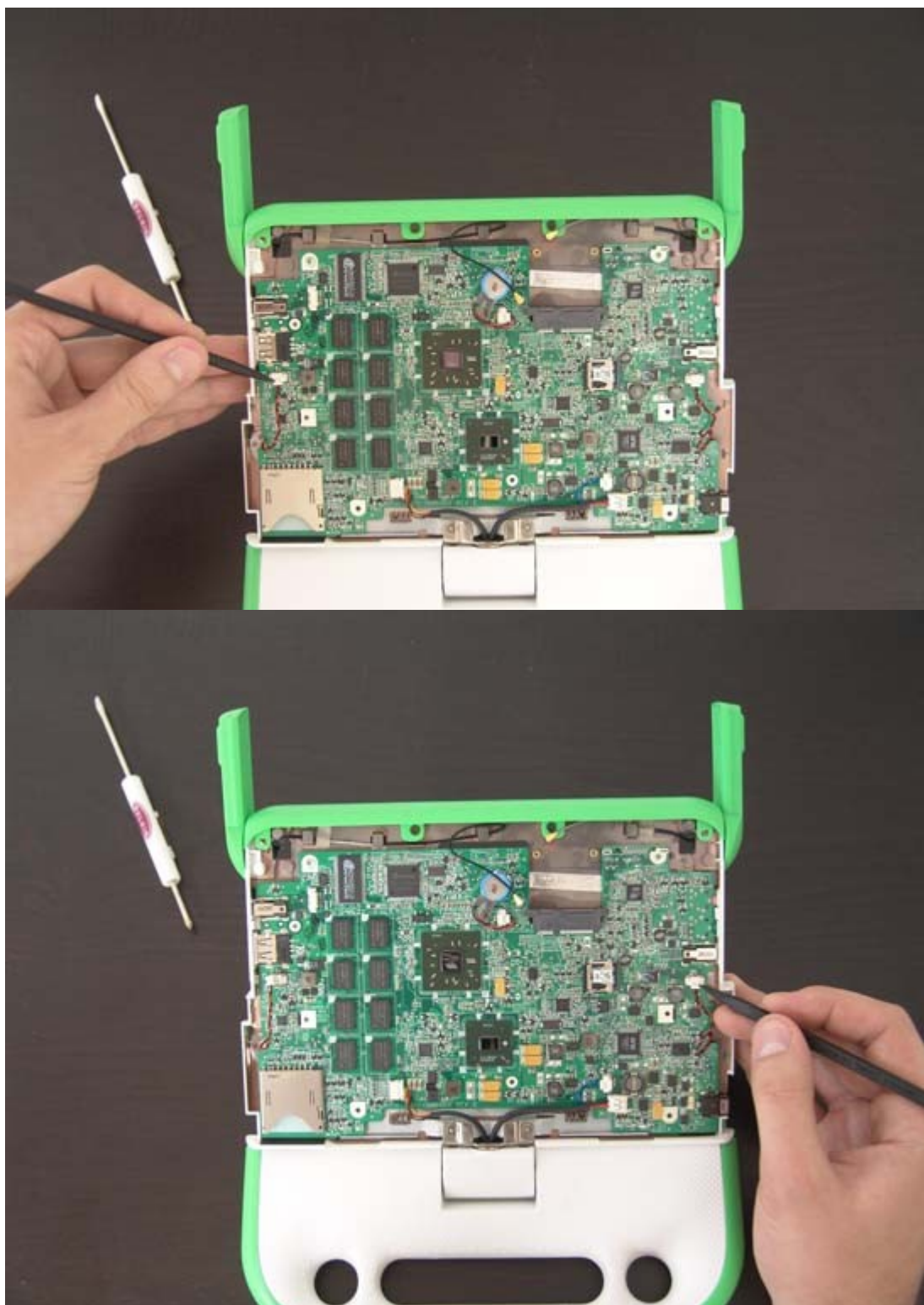
To remove the WiFi card first unplug the antenna cables from the card. Then undo the two screws holding it in place.



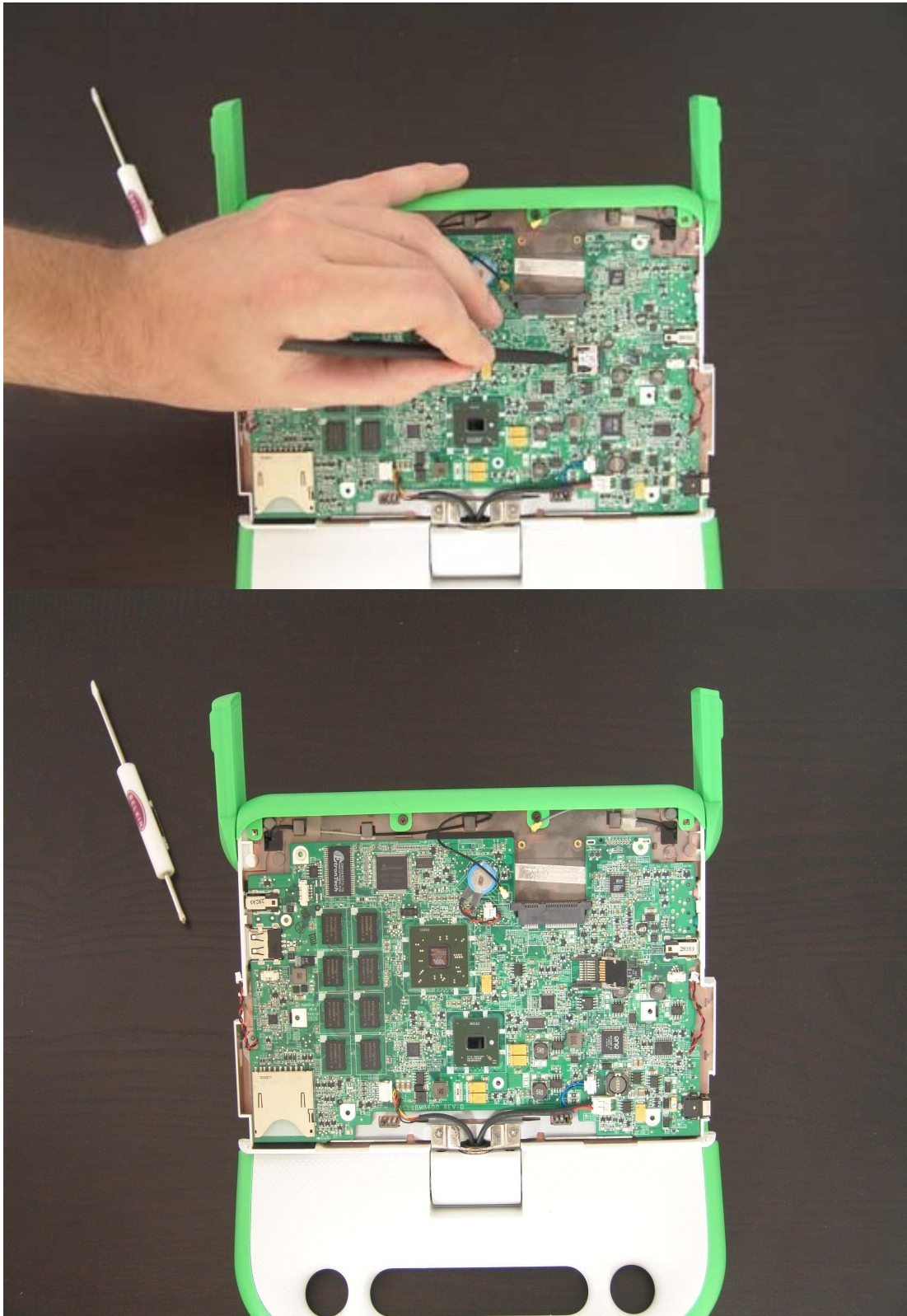
You should now be able to pull out the card.



Unplug the speakers from the both sides of the motherboard.



To remove the storage drive, slide the metal cover to the right and then lift it up.

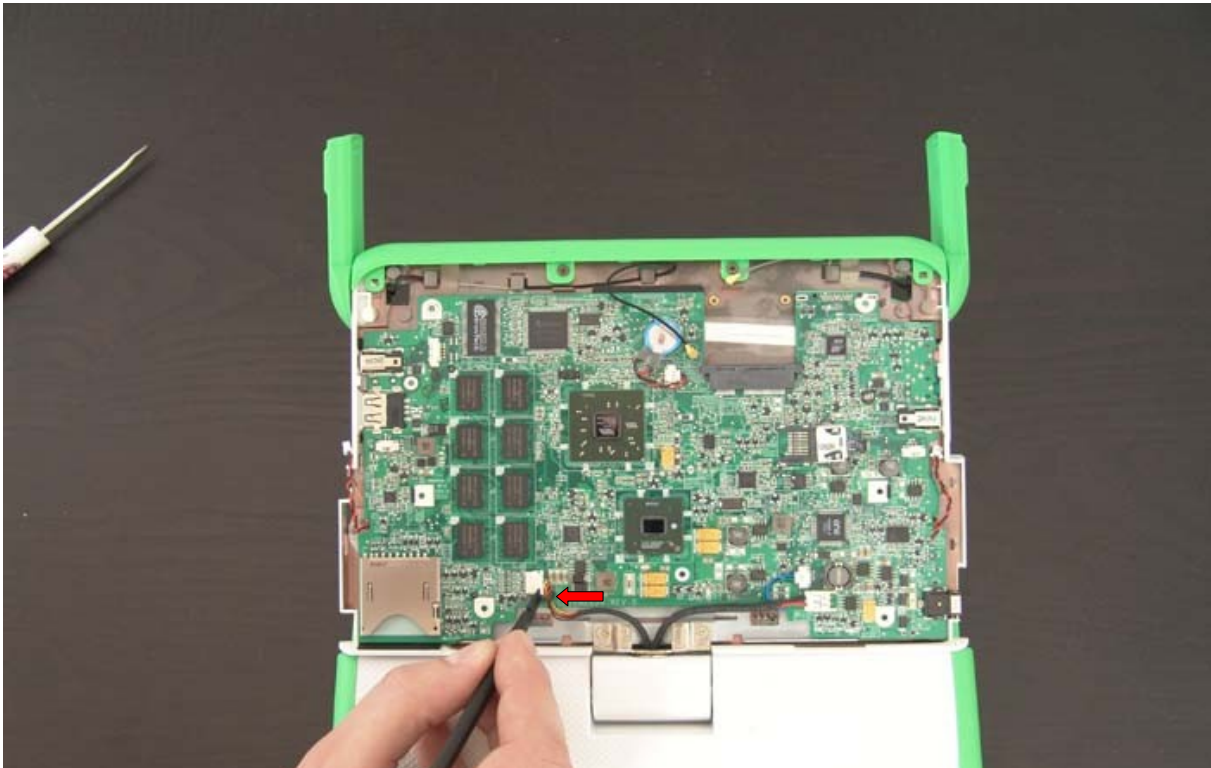


You should now be able to remove the storage drive (Micro SD card).



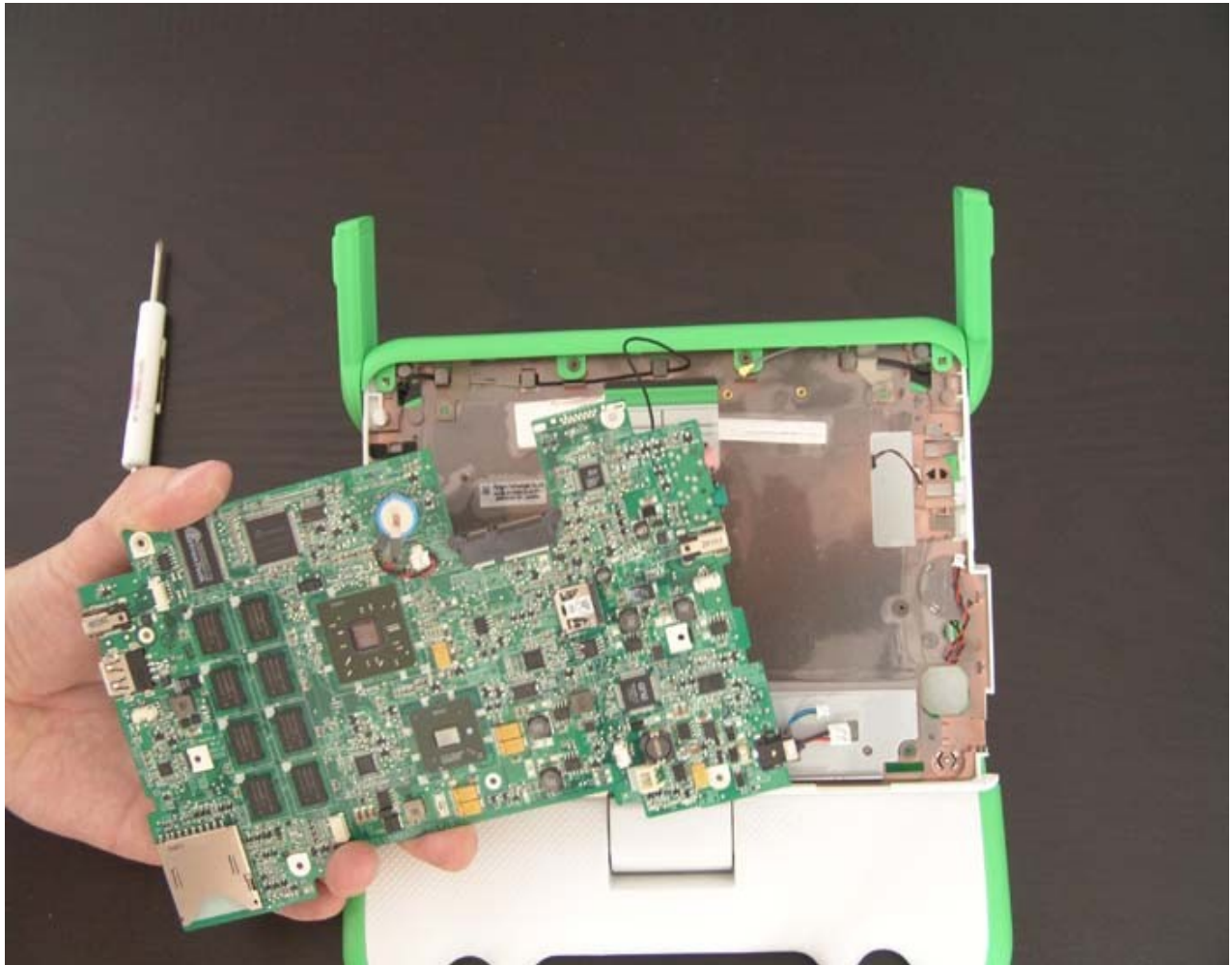


Disconnect the keyboard, touch pad and power cables from the motherboard.

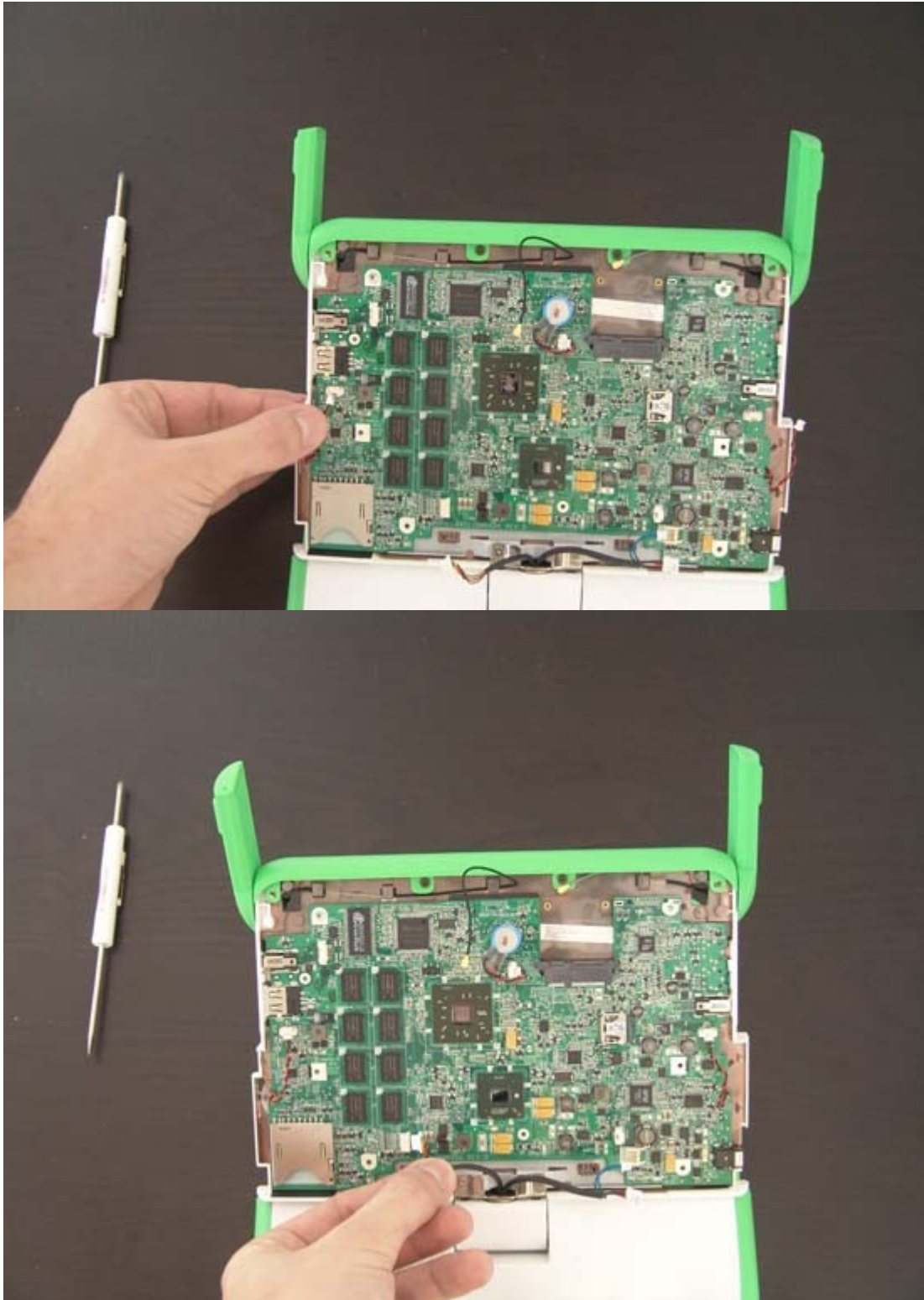




You should now be able to gently lift up and remove the motherboard.

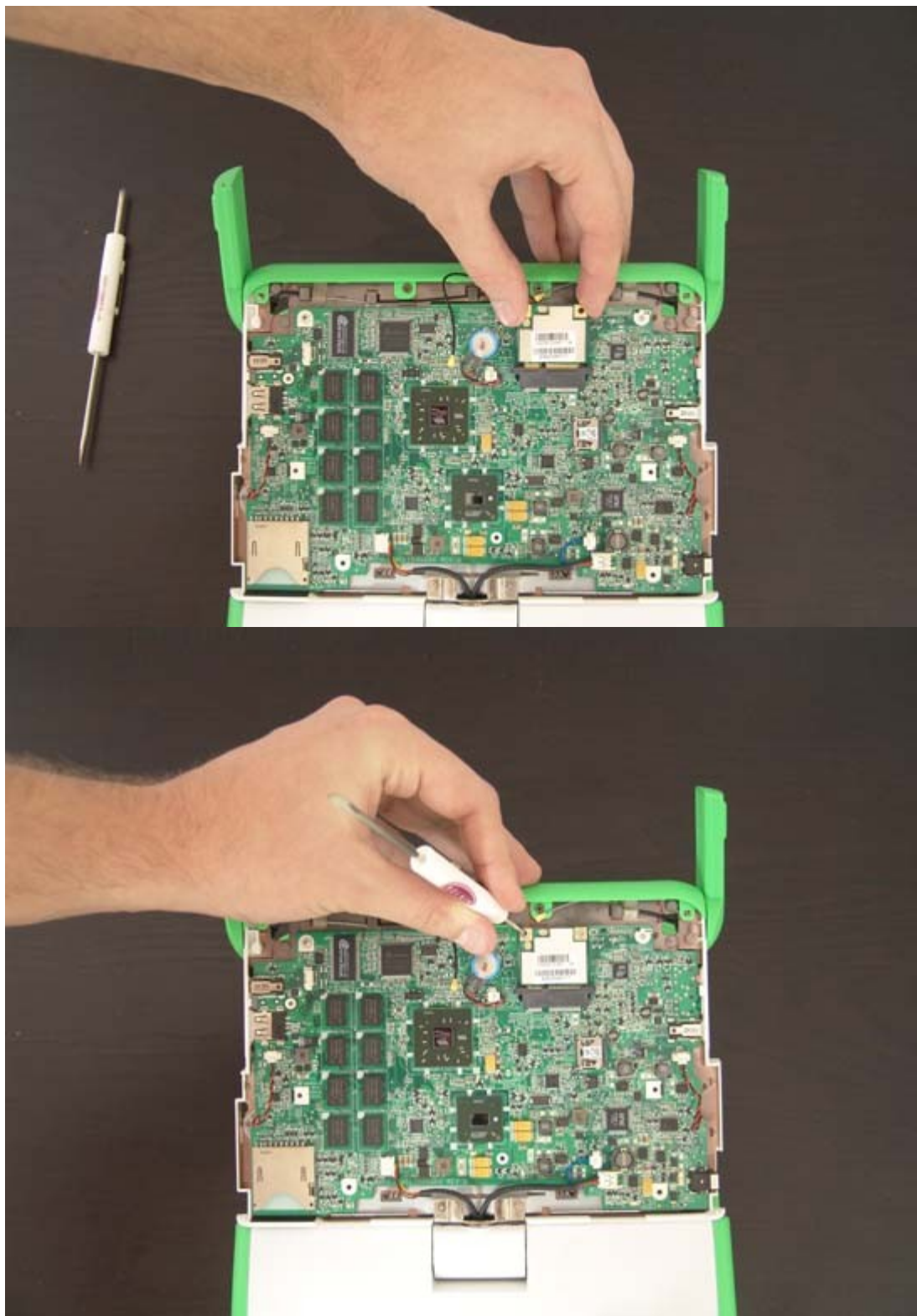


To reassemble the XO follow the above instructions in reverse order. First replace the motherboard, then connect the speakers, keyboard, touch pad and power connectors.



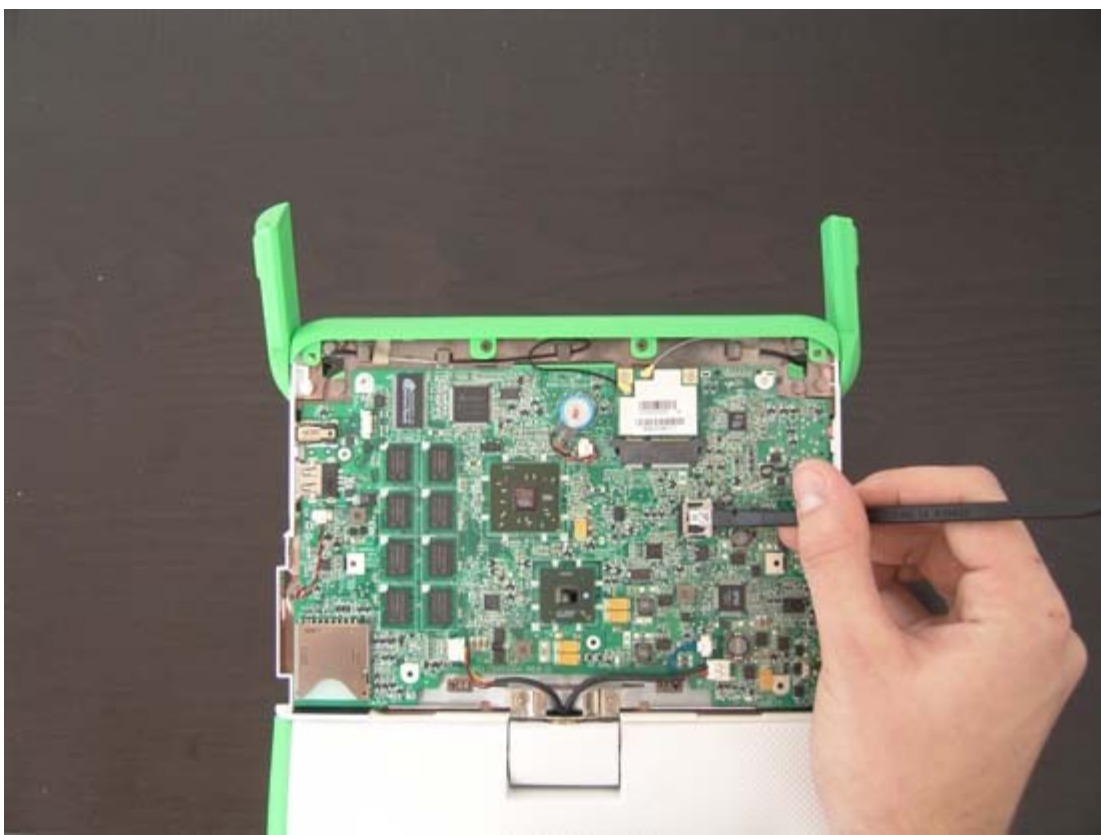


Replace and connect the wifi card, secure it with both screws and connect the antenna.



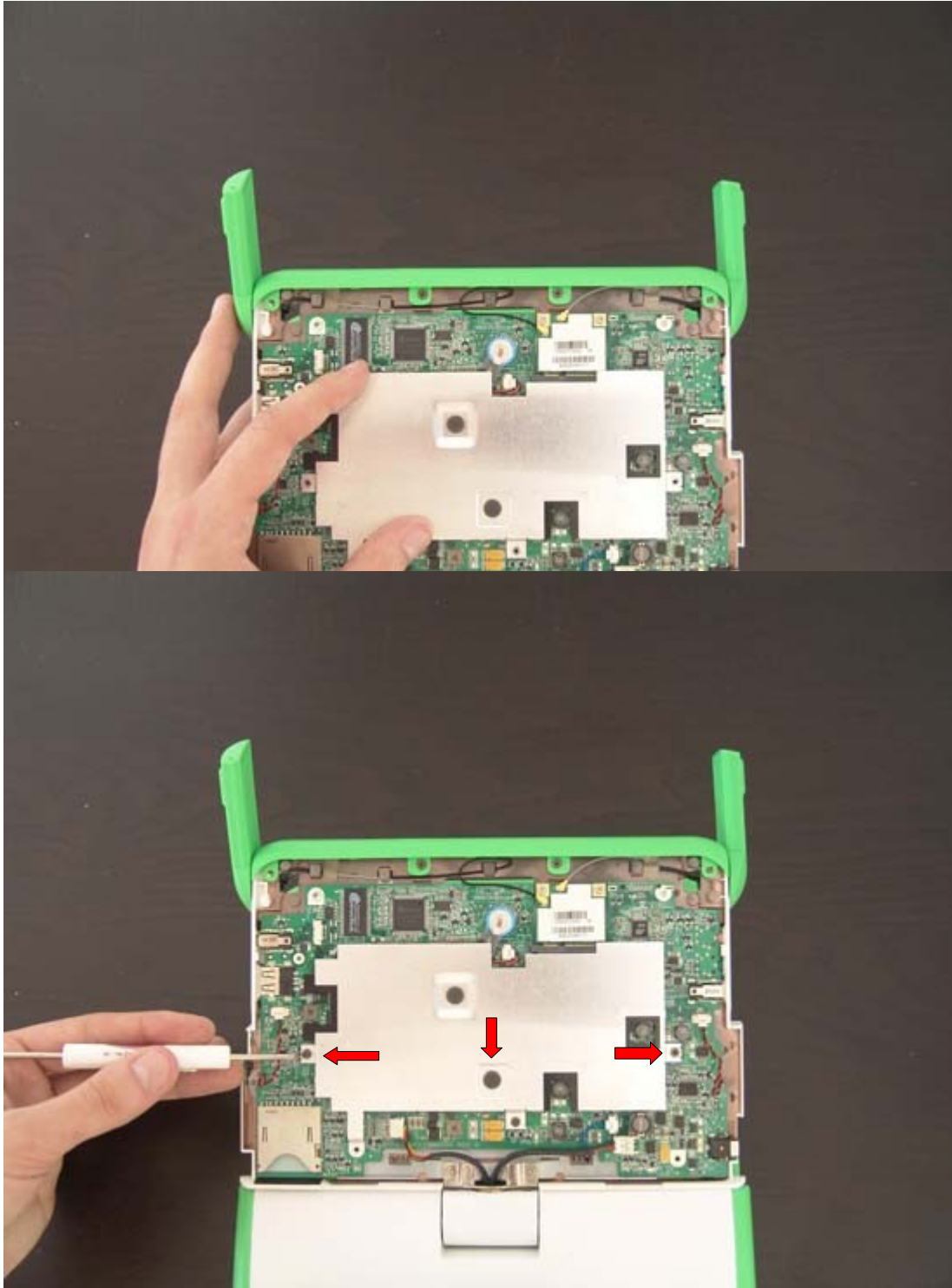


Replace the storage card by sliding it into the metal bracket. Close the bracket and gently slide it to the left to lock it in place.

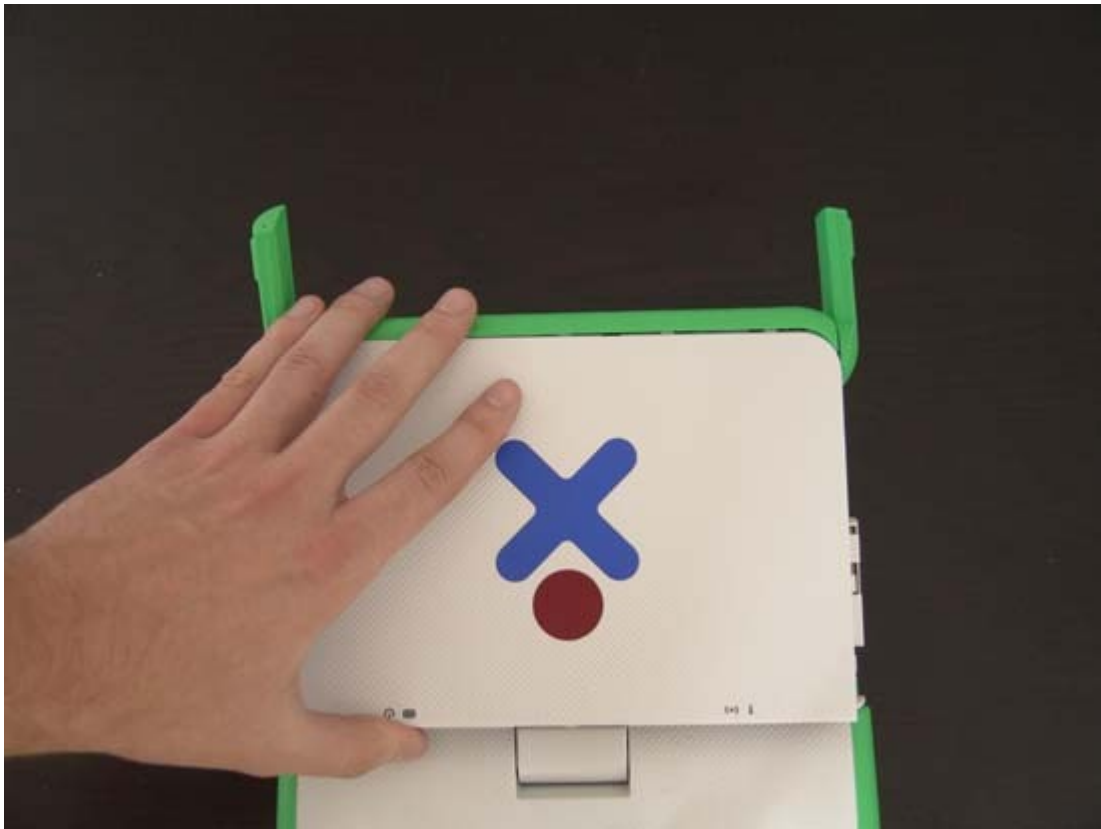




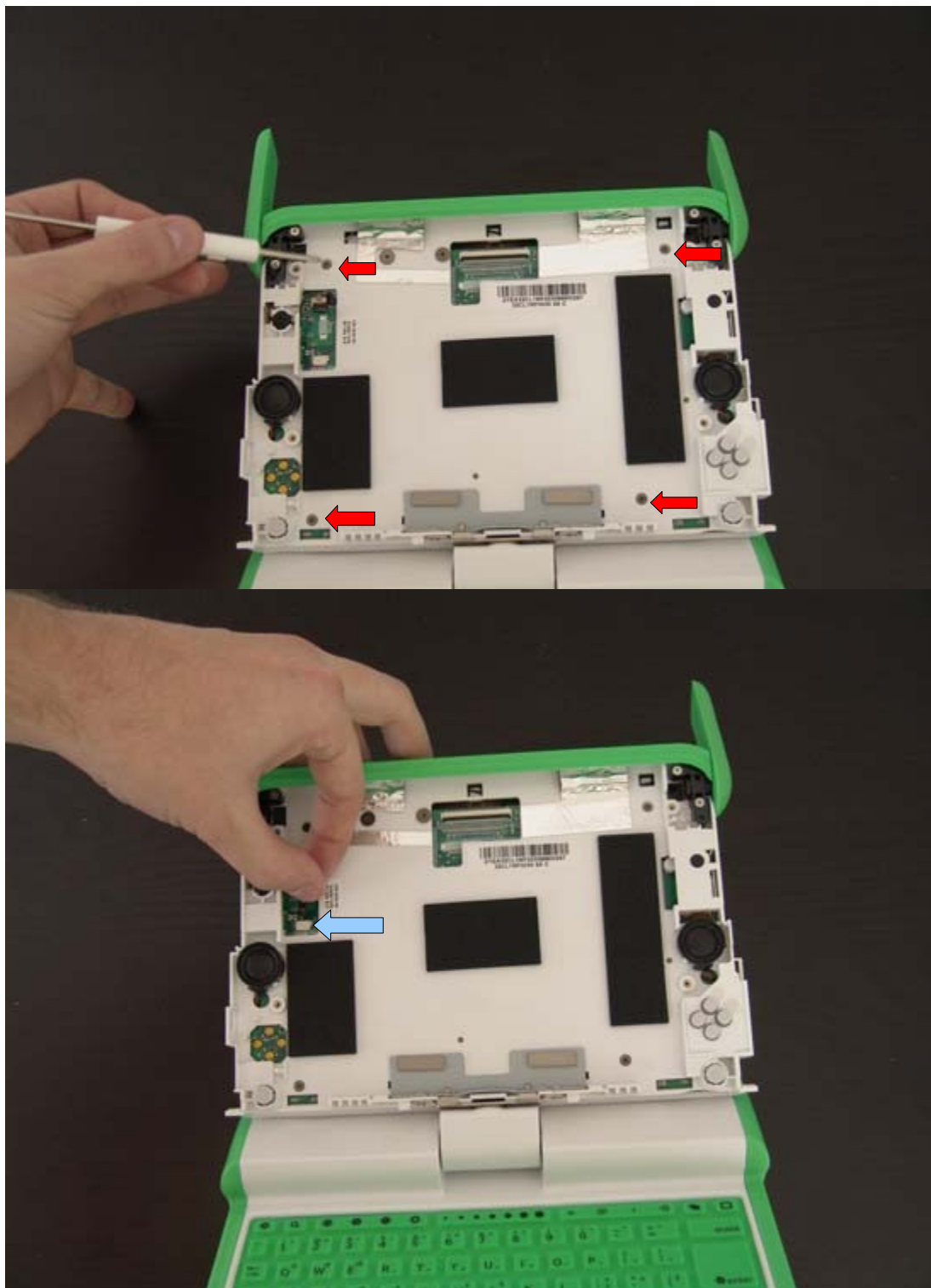
Replace the metal shield and secure it with the three screws.



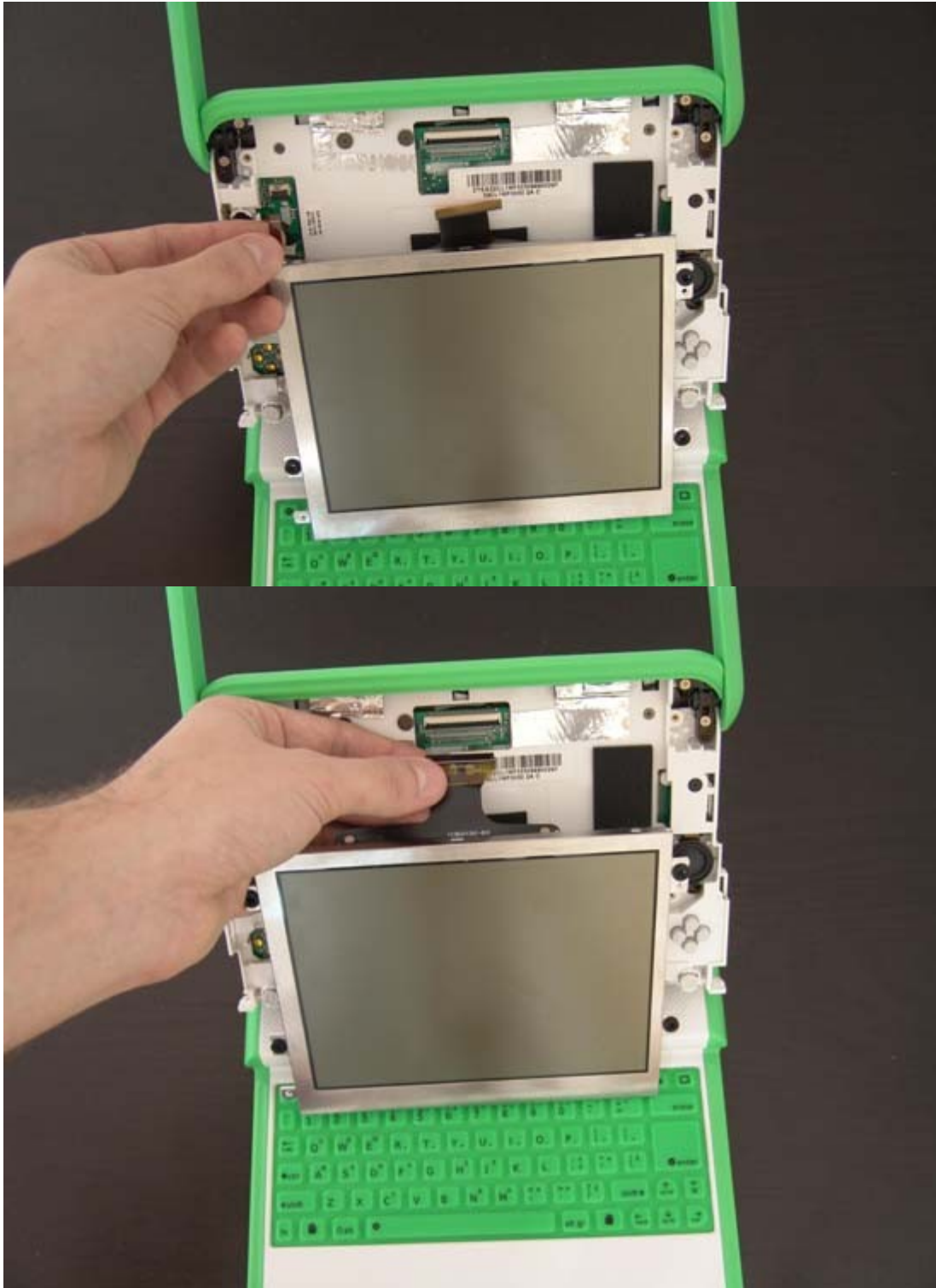
Replace the back cover.



Secure the back cover with the four screws on the front side and reconnect the microphone.



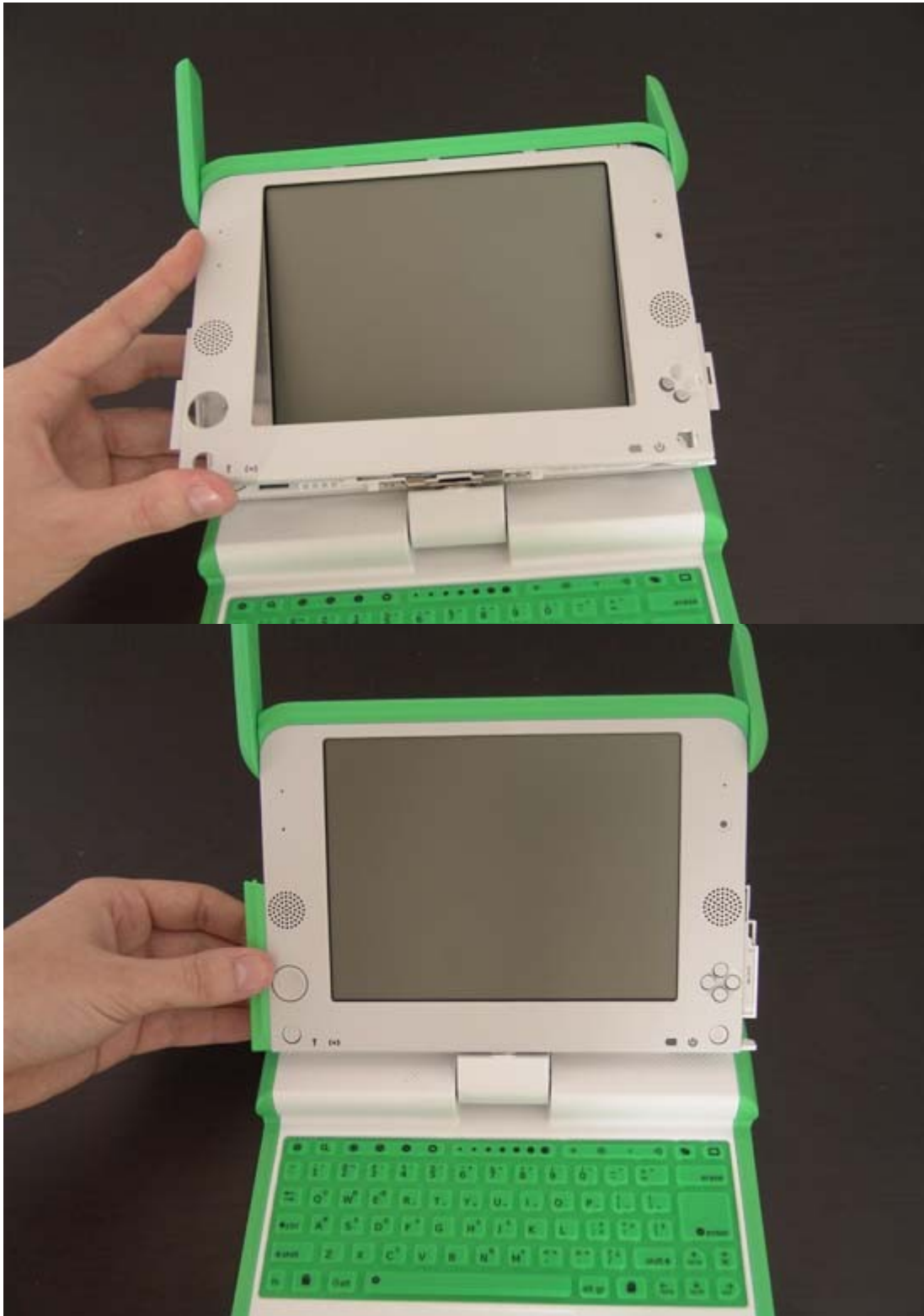
To reconnect the LCD screen first slide the two ribbons into the corresponding connections on the motherboard. Then clamp down the plastic wedges to secure it in place.



Re-seat the LCD screen into its proper position and secure it with four screws.



Replace the LCD screen frame and the green plastic peaces on each side of the screen.





Rotate the screen 90° and replace the two screws on each side of the bottom of the LCD screen.



You can now replace the battery and make sure the laptop is working correctly.





By: Peter Domanski